

BBS7 Rabbit pAb

货号: **AYP21035**

产品信息

反应	Human,Mouse,Rat
宿主	Rabbit
克隆性	Polyclonal
预测反应	
应用	WB IHC IF/ICC
推荐浓度	WB: 1:500 - 1:2000 IHC: 1:50 - 1:100 IF/ICC: 1:50 - 1:200
理论分子量	75kDa/80kDa
实测分子量	80kDa
形式	Liquid
保存条件	Store at -20°C. Avoid freeze / thaw cycles. Buffer: PBS with 0.01% thiomersal,50% glycerol,pH7.3.
偶联物	Unconjugated
阳性对照	Rat testis,Rat lung
细胞定位	axoneme,BBSome,centrosome,ciliary basal body,ciliary membrane,cytosol,nucleus
纯化	Affinity purification

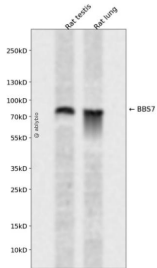
抗原信息

抗原信息	Recombinant fusion protein containing a sequence corresponding to amino acids 1-270 of human BBS7 (NP_060660.2).
序列	MDLILNRMDYLQVGVT SQTKMKLIPASRHRATQKVIGDHDGVVMCFGMKKGEAAAVFKTLPGPKIARLELGGVINTPQE KIFIAAASEIRGFTKRGKQFLSFETNLTESIKAMHISGSDLFLSASYIYNHYCDCKDQHYYLSGDKINDVICLPVERLSRITPVL ACQDRVLRVLQGS DVMYAVEVPGPPTVLALHNGNGGDSGEDLLFGTSDGK LALIQTTSKPVRKWEIQNEKRRGGILCID SFDIVGDGVKDLLVGRDDGMVEVYS

靶点信息

研究背景	This gene encodes one of eight proteins that form the BBSome complex containing BBS1, BBS2, BBS4, BBS5, BBS7, BBS8, BBS9 and BBIP10. The BBSome complex is believed to recruit Rab8(GTP) to the primary cilium and promote ciliogenesis. The BBSome complex assembly is mediated by a complex composed of three chaperonin-like BBS proteins (BBS6, BBS10, and BBS12) and CCT/TRiC family chaperonins. Mutations in this gene are implicated in Bardet-Biedl syndrome, a genetic disorder whose symptoms include obesity, retinal degeneration, polydactyly and nephropathy; however, mutations in this gene and the BBS8 gene are thought to play a minor role and mutations in chaperonin-like BBS genes are found to be a major contributor to disease development in a multiethnic Bardet-Biedl syndrome patient population. Two transcript variants encoding distinct isoforms have been identified for this gene.[provided by RefSeq, Oct 2014]
基因ID	55212
基因名	BBS7
Swiss	Q8IWX6
别名	BBS2L1;BBS7

产品验证



Western blot analysis of BBS7 expressed in Rat testis, Rat lung using BBS7 Rabbit pAb at 1:1000. Secondary antibody: HRP Goat Anti-Rabbit IgG (H+L) at 1:5000. Lysates/proteins: 30ug per lane. Blocking buffer: 5% non-fat dry milk in TBST. Detection: ECL Enhanced Kit. Exposure time: 120s.

实验步骤

访问官网浏览详情: www.ablybio.cn