

# KLHL11 Rabbit pAb

货号: **AYP21034**

## 产品信息

反应	Mouse,Rat
宿主	Rabbit
克隆性	Polyclonal
预测反应	
应用	WB
推荐浓度	<b>WB:</b> 1:500 - 1:2000
理论分子量	
实测分子量	80kDa
形式	Liquid
保存条件	Store at -20°C. Avoid freeze / thaw cycles. Buffer: PBS with 0.01% thiomersal,50% glycerol,pH7.3.
偶联物	Unconjugated
阳性对照	Rat testis,Rat lung
细胞定位	cytosol
纯化	Affinity purification

## 抗原信息

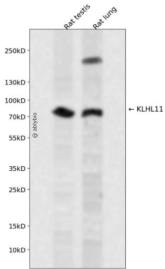
抗原信息	Recombinant fusion protein containing a sequence corresponding to amino acids 16-300 of human KLHL1 1 (NP_060613.1).
序列	ASLQVLEMESMETAAAGSAGLAAEVRGSGTVDFGPGPGISAMEASGGDPGPEAEDFECSSHCSELSWRQNEQRRQGLF CDITLCFGGAGGREFRAHRSVLAAATEYFTPLLSGQFSESRSRGRVEMRKWSSEPGPEPDTVEAVIEYMYTGRIRVSTGSVH EVLELADRFLIRLKEFCGEFLKKKLHLSNCVAIHSLAHMYTSLQALKAADMIRRNFKVKVIQDEEFYTLPFHLIRDWLSGLEIT VDSEEVLFETVLKWWQRNAEERERYFEELFKLLRLSQMKPT

## 靶点信息

研究背景	Component of a cullin-RING-based BCR (BTB-CUL3-RBX1 E3 ubiquitin-protein ligase complex that mediates the ubiquitination of target proteins, leading most often to their proteasomal degradation.
基因ID	55175

基因名	KLHL11
Swiss	Q9NVR0
别名	KLHL11

## 产品验证



Western blot analysis of KLHL11 expressed in Rat testis,Rat lung using KLHL11 Rabbit pAb at 1:1000. Secondary antibody: HRP Goat Anti-Rabbit IgG (H+L) at 1:5000. Lysates/proteins: 30ug per lane. Blocking buffer: 5% non-fat dry milk in TBST. Detection: ECL Enhanced Kit. Exposure time: 120s.

## 实验步骤

访问官网浏览详情: [www.ablybio.cn](http://www.ablybio.cn)