

ARHGEF10L Rabbit pAb

货号: **AYP21033**

产品信息

反应	Human,Rat
宿主	Rabbit
克隆性	Polyclonal
预测反应	
应用	WB
推荐浓度	WB: 1:500 - 1:2000
理论分子量	
实测分子量	140kDa
形式	Liquid
保存条件	Store at -20°C. Avoid freeze / thaw cycles. Buffer: PBS with 0.01% thiomersal,50% glycerol,pH7.3.
偶联物	Unconjugated
阳性对照	Rat lung
细胞定位	cytosol
纯化	Affinity purification

抗原信息

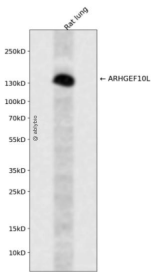
抗原信息	Recombinant fusion protein containing a sequence corresponding to amino acids 1120-1230 of human ARHGEF10L (NP_001011722).
序列	SHVGRELTRKKGILLQYRLRSTAHLPGLLSMREPAPADGAALEHSEEDGSIYEMADDPDIWVRSRPCARDAHRKEICSVAIISGGQGYRNFGSALGSSGRQAPCGETDST

靶点信息

研究背景	This gene belongs to the RhoGEF subfamily of RhoGTPases. Members of this subfamily are activated by specific guanine nucleotide exchange factors (GEFs) and are involved in signal transduction. The encoded protein shows cytosolic distribution. Alternative splicing results in multiple transcript variants. [provided by RefSeq, Jun 2016]
基因ID	55160

基因名	ARHGEF10L
Swiss	Q9HCE6
别名	GrinchGEF;ARHGEF10L

产品验证



Western blot analysis of ARHGEF10L expressed in Rat lung using ARHGEF10L Rabbit pAb at 1:1000. Secondary antibody: HRP Goat Anti-Rabbit IgG (H+L) at 1:5000. Lysates/proteins: 30ug per lane. Blocking buffer: 5% non-fat dry milk in TBST. Detection: ECL Enhanced Kit. Exposure time: 120s.

实验步骤

访问官网浏览详情: www.ablybio.cn