

TOMM7 Rabbit pAb

货号: **AYP21028**

产品信息

反应	Mouse
宿主	Rabbit
克隆性	Polyclonal
预测反应	
应用	WB
推荐浓度	WB: 1:1000 - 1:5000
理论分子量	
实测分子量	11KDa
形式	Liquid
保存条件	Store at -20°C. Avoid freeze / thaw cycles. Buffer: PBS with 0.05% proclin300,50% glycerol,pH7.3.
偶联物	Unconjugated
阳性对照	293F
细胞定位	mitochondrial outer membrane,mitochondrion
纯化	Affinity purification

抗原信息

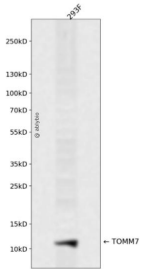
抗原信息	A synthetic peptide corresponding to a sequence within amino acids 1-55 of human TOMM7 (NP_061932.1).
序列	MVKLSKEAKQRLQQLFKGSQFAIRWGFIPPLVIYLGFKRGADPGMPEPTVLSLLWG

靶点信息

研究背景	This gene encodes a subunit of the translocase of the outer mitochondrial membrane. The encoded protein regulates the assembly and stability of the translocase complex. [provided by RefSeq, Oct 2012]
基因ID	54543
基因名	TOMM7

Swiss	Q9P0U1
别名	TOM7;TOMM7

产品验证



Western blot analysis of TOMM7 expressed in 293F using TOMM7 Rabbit pAb at 1:1000. Secondary antibody: HRP Goat Anti-Rabbit IgG (H+L) at 1:5000. Lysates/proteins: 30ug per lane. Blocking buffer: 5% non-fat dry milk in TBST. Detection: ECL Enhanced Kit. Exposure time: 120s.

实验步骤

访问官网浏览详情: www.ablybio.cn