

RSL24D1 Rabbit pAb

货号: **AYP21018**

产品信息

反应	Human,Mouse
宿主	Rabbit
克隆性	Polyclonal
预测反应	
应用	WB
推荐浓度	WB: 1:500 - 1:2000
理论分子量	
实测分子量	20kDa
形式	Liquid
保存条件	Store at -20°C. Avoid freeze / thaw cycles. Buffer: PBS with 0.01% thiomersal,50% glycerol,pH7.3.
偶联物	Unconjugated
阳性对照	U-87MG,HepG2,Mouse spleen
细胞定位	nucleolus,nucleoplasm
纯化	Affinity purification

抗原信息

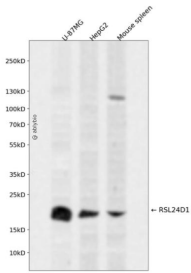
抗原信息	Recombinant fusion protein containing a sequence corresponding to amino acids 10-80 of human RSL24D1 (NP_057388.1).
序列	SGPIYPGHGMMFVRNDCKVFRFCKSKCHKNFKKRNPRKVRWTKAFRKAAGKELTVDNSFEFEKRRNEPIK

靶点信息

研究背景	This gene encodes a protein sharing a low level of sequence similarity with human ribosomal protein L24. Although this gene has been referred to as RPL24, L30, and 60S ribosomal protein L30 isolog in the sequence databases, it is distinct from the human genes officially named RPL24 (which itself has been referred to as ribosomal protein L30) and RPL30. The protein encoded by this gene localizes to the nucleolus and is thought to play a role in the biogenesis of the 60S ribosomal subunit. The precise function of this gene is currently unknown. This gene utilizes alternative polyadenylation signals and has multiple pseudogenes. [provided by RefSeq, Jul 2012]
------	--

基因ID	51187
基因名	RSL24D1
Swiss	Q9UHA3
别名	C15orf15;HRP-L30-iso;L30;RLP24;RPL24;RPL24L;TVAS3;RSL24D1

产品验证



Western blot analysis of RSL24D1 expressed in U-87MG, HepG2, Mouse spleen using RSL24D1 Rabbit pAb at 1:1000. Secondary antibody: HRP Goat Anti-Rabbit IgG (H+L) at 1:5000. Lysates/proteins: 30ug per lane. Blocking buffer: 5% non-fat dry milk in TBST. Detection: ECL Enhanced Kit. Exposure time: 120 S.

实验步骤

访问官网浏览详情: www.ablybio.cn