

# PLA2G3 Rabbit pAb

货号: **AYP21015**

## 产品信息

反应	Human,Mouse
宿主	Rabbit
克隆性	Polyclonal
预测反应	
应用	WB
推荐浓度	<b>WB:</b> 1:500 - 1:2000
理论分子量	
实测分子量	57kDa
形式	Liquid
保存条件	Store at -20°C. Avoid freeze / thaw cycles. Buffer: PBS with 0.01% thiomersal,50% glycerol,pH7.3.
偶联物	Unconjugated
阳性对照	293T,K-562,Mouse liver
细胞定位	centriole,extracellular region,extracellular space,plasma membrane,recycling endosome
纯化	Affinity purification

## 抗原信息

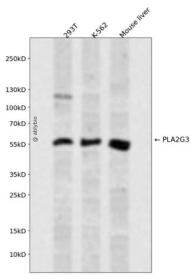
抗原信息	A synthetic peptide corresponding to a sequence within amino acids 400-500 of human PLA2G3 (NP_056530.2).
序列	RLARFLRLHSPPEVTNMLWELLGTTTCFKLAPPLDCVEGKNCSDPRAIRVSARHLRRLQRRHQLQDKGTDERQPWPSEPLRGPMSEFYNQCLQLTQAARRP

## 靶点信息

研究背景	This gene encodes a protein that belongs to the secreted phospholipase A2 family, whose members include the bee venom enzyme. The encoded enzyme functions in lipid metabolism and catalyzes the calcium-dependent hydrolysis of the sn-2 acyl bond of phospholipids to release arachidonic acid and lysophospholipids. This enzyme acts as a negative regulator of ciliogenesis, and may play a role in cancer development by stimulating tumor cell growth and angiogenesis. This gene is associated with oxidative stress, and polymorphisms in this gene are linked to risk for Alzheimer's disease. [provided by RefSeq, Apr 2014]
------	---

基因ID	50487
基因名	PLA2G3
Swiss	Q9NZ20
别名	GIII-SPLA2;SPLA2III;sPLA2-III;PLA2G3

## 产品验证



Western blot analysis of PLA2G3 expressed in 293T, K-562, Mouse liver using PLA2G3 Rabbit pAb at 1:1000. Secondary antibody: HRP Goat Anti-Rabbit IgG (H+L) at 1:5000. Lysates/proteins: 30ug per lane. Blocking buffer: 5% non-fat dry milk in TBST. Detection: ECL Enhanced Kit. Exposure time: 120s.

## 实验步骤

访问官网浏览详情: [www.ablybio.cn](http://www.ablybio.cn)