

# STEAP1 Rabbit pAb

货号: **AYP21010**

## 产品信息

反应	Human,Mouse,Rat
宿主	Rabbit
克隆性	Polyclonal
预测反应	
应用	WB
推荐浓度	<b>WB:</b> 1:500 - 1:2000
理论分子量	
实测分子量	40kDa
形式	Liquid
保存条件	Store at -20°C. Avoid freeze / thaw cycles. Buffer: PBS with 0.01% thiomersal,50% glycerol,pH7.3.
偶联物	Unconjugated
阳性对照	PC-3,HepG2,DU145,Mouse testis,Rat brain
细胞定位	cell-cell junction,endosome,plasma membrane
纯化	Affinity purification

## 抗原信息

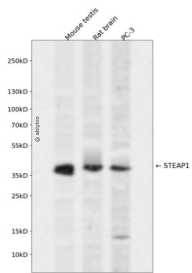
抗原信息	Recombinant fusion protein containing a sequence corresponding to amino acids 1-80 of human STEAP1 (NP_036581.1).
序列	MESRKDITNQEELWKMKPRRNLEDDYLHKDTGETSMLKRPVLLHLHQTAAHADEFDCPSELQHTQELFPQWHLPIKIAAI

## 靶点信息

研究背景	This gene is predominantly expressed in prostate tissue, and is found to be upregulated in multiple cancer cell lines. The gene product is predicted to be a six-transmembrane protein, and was shown to be a cell surface antigen significantly expressed at cell-cell junctions. [provided by RefSeq, Jul 2008]
基因ID	26872
基因名	STEAP1

<b>Swiss</b>	Q9UHE8
别名	PRSS24;STEAP;STEAP1

## 产品验证



Western blot analysis of STEAP1 expressed in Mouse testis,Rat brain,PC-3 using STEAP1 Rabbit pAb at 1:1000. Secondary antibody: HRP Goat Anti-Rabbit IgG (H+L) at 1:5000. Lysates/proteins: 30ug per lane. Blocking buffer: 5% non-fat dry milk in TBST. Detection: ECL Enhanced Kit. Exposure time: 120s.

## 实验步骤

访问官网浏览详情: [www.ablybio.cn](http://www.ablybio.cn)