

RGCC Rabbit pAb

货号: **AYP21009**

产品信息

| | |
|-------|--|
| 反应 | Human,Mouse,Rat |
| 宿主 | Rabbit |
| 克隆性 | Polyclonal |
| 预测反应 | |
| 应用 | WB |
| 推荐浓度 | WB: 1:500 - 1:2000 |
| 理论分子量 | |
| 实测分子量 | 15KD/20kDa |
| 形式 | Liquid |
| 保存条件 | Store at -20°C. Avoid freeze / thaw cycles. Buffer: PBS with 0.01% thiomersal,50% glycerol,pH7.3. |
| 偶联物 | Unconjugated |
| 阳性对照 | 293T,Mouse kidney,Mouse heart |
| 细胞定位 | centrosome,cytoplasm,cytosol,nucleolus,nucleoplasm,nucleus |
| 纯化 | Affinity purification |

抗原信息

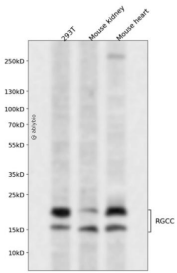
| | |
|------|--|
| 抗原信息 | A synthetic peptide corresponding to a sequence within amino acids 40-100 of human RGCC (NP_054778.2). |
| 序列 | ADFASPFHERHFHYEEHLERMKRRSSASVSDSSGFSDESADSLYRNSFSFSDEKLNSPTD |

靶点信息

| | |
|------|--|
| 研究背景 | This gene is thought to regulate cell cycle progression. It is induced by p53 in response to DNA damage, or by sublytic levels of complement system proteins that result in activation of the cell cycle. The encoded protein localizes to the cytoplasm during interphase and to centrosomes during mitosis. The protein forms a complex with polo-like kinase 1. The protein also translocates to the nucleus in response to treatment with complement system proteins, and can associate with and increase the kinase activity of cell division cycle 2 protein. In different assays and cell types, overexpression of this protein has been shown to activate or suppress cell cycle progression. [provided by RefSeq, Jul 2008] |
|------|--|

| | |
|-------|---------------------------------------|
| 基因ID | 28984 |
| 基因名 | RGCC |
| Swiss | Q9H4X1 |
| 别名 | C13orf15;RGC-32;RGC32;bA157L14.2;RGCC |

产品验证



Western blot analysis of RGCC expressed in 293T, Mouse kidney, Mouse heart using RGCC Rabbit pAb at 1:1000. Secondary antibody: HRP Goat Anti-Rabbit IgG (H+L) at 1:5000. Lysates/proteins: 30ug per lane . Blocking buffer: 5% non-fat dry milk in TBST. Detection: ECL Enhanced Kit. Exposure time: 120s.

实验步骤

访问官网浏览详情: www.ablybio.cn