

TMED3 Rabbit pAb

货号: **AYP21006**

产品信息

反应	Human,Mouse,Rat
宿主	Rabbit
克隆性	Polyclonal
预测反应	
应用	WB IHC IF/ICC
推荐浓度	WB: 1:500 - 1:2000 IHC: 1:50 - 1:200 IF/ICC: 1:50 - 1:200
理论分子量	19kDa/24kDa
实测分子量	25kDa
形式	Liquid
保存条件	Store at -20°C. Avoid freeze / thaw cycles. Buffer: PBS with 0.01% thiomersal,50% glycerol,pH7.3.
偶联物	Unconjugated
阳性对照	MCF7,A-549,A-431
细胞定位	COPI vesicle coat,COPII-coated ER to Golgi transport vesicle,endoplasmic reticulum,endoplasmic reticulum-Golgi intermediate compartment,Golgi apparatus,transport vesicle
纯化	Affinity purification

抗原信息

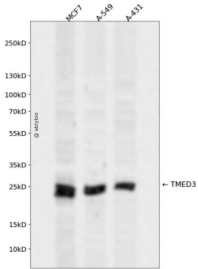
抗原信息	Recombinant fusion protein containing a sequence corresponding to amino acids 24-180 of human TMED3 (NP_031390.1).
序列	PCGAELTFELPDNAKQCFHEEVEQGVKFSLDYQVITGGHYDVDCYVEDPQGNTIYRETKKQYDSFTYRAEVKGVYQFCFSNEFSTFSHKTVYDFQVGDPEPILPDMGNRVLTALQMESACVTIHEALKTVIDSQTHYRLREAQDRARAEDLNSRVS

靶点信息

研究背景	Potential role in vesicular protein trafficking, mainly in the early secretory pathway. Contributes to the coupled localization of TMED2 and TMED10 in the cis-Golgi network.
基因ID	23423

基因名	TMED3
Swiss	Q9Y3Q3
别名	C15orf22;P24B;p24g4;p26;TMED3

产品验证



Western blot analysis of TMED3 expressed in MCF7,A-549,A-431 using TMED3 Rabbit pAb at 1:1000. Secondary antibody: HRP Goat Anti-Rabbit IgG (H+L) at 1:5000. Lysates/proteins: 30ug per lane. Blocking buffer: 5% non-fat dry milk in TBST. Detection: ECL Enhanced Kit. Exposure time: 120s.

实验步骤

访问官网浏览详情: www.ablybio.cn