

SENP6 Rabbit pAb

货号: **AYP20998**

产品信息

反应	Rat
宿主	Rabbit
克隆性	Polyclonal
预测反应	
应用	WB
推荐浓度	WB: 1:500 - 1:2000
理论分子量	
实测分子量	126kDa
形式	Liquid
保存条件	Store at -20°C. Avoid freeze / thaw cycles. Buffer: PBS with 0.01% thiomersal,50% glycerol,pH7.3.
偶联物	Unconjugated
阳性对照	Rat thymus,Rat spleen
细胞定位	cytoplasm,cytosol,nucleoplasm,nucleus
纯化	Affinity purification

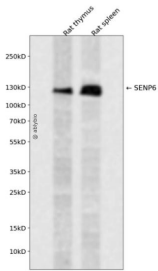
抗原信息

抗原信息	Recombinant fusion protein containing a sequence corresponding to amino acids 811-1112 of human SENP6 (NP_056386.2).
序列	MESCSQNSSAKPVIKMLNKKHCVIAIDSNPGQEESDPYKRNICSVKYSVKKINHTASENEEFNKGESTSQKVADRTKSE NGLQNESLSSTHHTDGLSKIRLNYSDESPEAGKMLEDELVDFSEDQDNQDDSSDDGFLADDNCSSEIGQWHLKPTICKQ PCILLMDSLRLGPSRSNVVKILREYLEVEWEVKKGSKRSFSKDVMMKGSNPKVPQNNFSDCGVYVLQYVESFFENPILSFEL PMNLANWFPPPRMRTKREEIRNIIKLQEDQSKEKRKHKDTYSTEAPLGEGTEQYVNSISD

靶点信息

研究背景	Ubiquitin-like molecules (UBLs), such as SUMO1 (UBL1; MIM 601912), are structurally related to ubiquitin (MIM 191339) and can be ligated to target proteins in a similar manner as ubiquitin. However, covalent attachment of UBLs does not result in degradation of the modified proteins. SUMO1 modification is implicated in the targeting of RANGAP1 (MIM 602362) to the nuclear pore complex, as well as in stabilization of I-kappa-B-alpha (NFKBIA; MIM 164008) from degradation by the 26S proteasome. Like ubiquitin, UBLs are synthesized as precursor proteins, with 1 or more amino acids following the C-terminal glycine-glycine residues of the mature UBL protein. Thus, the tail sequences of the UBL precursors need to be removed by UBL-specific proteases, such as SENP6, prior to their conjugation to target proteins (Kim et al., 2000 [PubMed 10799485]). SENPs also display isopeptidase activity for deconjugation of SUMO-conjugated substrates (Lima and Reverter, 2008 [PubMed 18799455]).[supplied by OMIM, Jun 2009]
基因ID	26054
基因名	SENP6
Swiss	Q9GZR1
别名	SSP1;SUSP1;SENP6

产品验证



Western blot analysis of SENP6 expressed in Rat thymus, Rat spleen using SENP6 Rabbit pAb at 1:1000. Secondary antibody: HRP Goat Anti-Rabbit IgG (H+L) at 1:5000. Lysates/proteins: 30ug per lane. Blocking buffer: 5% non-fat dry milk in TBST. Detection: ECL Enhanced Kit. Exposure time: 120s.

实验步骤

访问官网浏览详情: www.ablybio.cn