

SUMF2 Rabbit pAb

货号: AYP20996

产品信息

反应	Human,Mouse,Rat
宿主	Rabbit
克隆性	Polyclonal
预测反应	
应用	WB IF/ICC
推荐浓度	WB: 1:500 - 1:2000 IF/ICC: 1:50 - 1:100
理论分子量	
实测分子量	34kDa
形式	Liquid
保存条件	Store at -20°C. Avoid freeze / thaw cycles. Buffer: PBS with 0.01% thiomersal,50% glycerol,pH7.3.
偶联物	Unconjugated
阳性对照	U-87MG,A-549,HepG2,BxPC-3
细胞定位	endoplasmic reticulum,endoplasmic reticulum lumen
纯化	Affinity purification

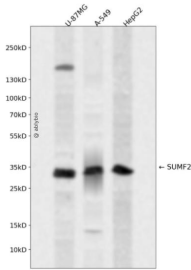
抗原信息

抗原信息	Recombinant fusion protein containing a sequence corresponding to amino acids 45-320 of human SUMF 2 (NP_056226.2).
序列	QATSMVQLQGGRFLMGTNSPDSRDGEGPVREATVKPFAIDIFPVTNKDFRDFVREKKYRTEAEMFGWSFVFEDFVSDEL RNKATQPMKSVLWWLPVEKAFWRQPAGPGSGIRERLEHPVLHVSWNDARAYCAWRGKRLPTEEEWEFAARGGLKGQV YPWGNWFQPNRTNLWQGFPGDKAEDGFHGVSPVNAFPAQNNYGLYDLLGNVWEWTASPYQAAEQDMRVLRGAS WIDTADGSANHRARVTTRMGNTPDASDNLGFRCAADAGRPPGEL

靶点信息

研究背景	The catalytic sites of sulfatases are only active if they contain a unique amino acid, C-alpha-formylglycine (FGly). The FGly residue is posttranslationally generated from a cysteine by enzymes with FGly-generating activity. The gene described in this record is a member of the sulfatase-modifying factor family and encodes a protein with a DUF323 domain that localizes to the lumen of the endoplasmic reticulum. This protein has low levels of FGly-generating activity but can heterodimerize with another family member - a protein with high levels of FGly-generating activity. Alternate transcriptional splice variants, encoding different isoforms, have been characterized. [provided by RefSeq, Jul 2008]
基因ID	25870
基因名	SUMF2
Swiss	Q8NBJ7
别名	pFGE;SUMF2

产品验证



Western blot analysis of SUMF2 expressed in U-87MG,A-549,HepG2 using SUMF2 Rabbit pAb at 1:1000. Secondary antibody: HRP Goat Anti-Rabbit IgG (H+L) at 1:5000. Lysates/proteins: 30ug per lane. Blocking buffer: 5% non-fat dry milk in TBST. Detection: ECL Enhanced Kit. Exposure time: 120s.

实验步骤

访问官网浏览详情: www.ablybio.cn