

PLCL2 Rabbit pAb

货号: **AYP20991**

产品信息

| | |
|-------|--------------------------------------------------------------------------------------------------------|
| 反应 | Mouse |
| 宿主 | Rabbit |
| 克隆性 | Polyclonal |
| 预测反应 | |
| 应用 | WB |
| 推荐浓度 | WB: 1:500 - 1:2000 |
| 理论分子量 | |
| 实测分子量 | 126kDa |
| 形式 | Liquid |
| 保存条件 | Store at -20°C. Avoid freeze / thaw cycles. Buffer: PBS with 0.01% thiomersal, 50% glycerol, pH7.3. |
| 偶联物 | Unconjugated |
| 阳性对照 | Mouse skeletal muscle |
| 细胞定位 | cytoplasm |
| 纯化 | Affinity purification |

抗原信息

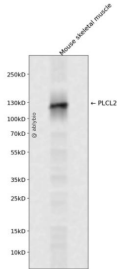
| | |
|------|------------------------------------------------------------------------------------------------------------------------------------------------------------------------------|
| 抗原信息 | Recombinant fusion protein containing a sequence corresponding to amino acids 130-300 of human PLCL2 (NP_055999.2). |
| 序列 | TLDMLESSQDNMRTSWVSQMFSEIDVDNLGHITLCNAVQCIRNLNPLGLKTSKIELKFKELHKSKDKAGTEVTKEEFIEVFHELCTRPEIYFLLVQFSSNKEFLDTKDLMMFLEAEQGVAHINEEISLEIIHKYEPSKEGQEKGWLSIDGFTNYLMSPDCYIFDPEHKKVCQ |

靶点信息

| | |
|------|--------------------------------------------------------------------------------------|
| 研究背景 | May play an role in the regulation of Ins(1,4,5)P3 around the endoplasmic reticulum. |
| 基因ID | 23228 |
| 基因名 | PLCL2 |

| | |
|-------|-------------|
| Swiss | Q9UPR0 |
| 别名 | PLCE2;PLCL2 |

产品验证



Western blot analysis of PLCL2 expressed in Mouse skeletal muscle using PLCL2 Rabbit pAb at 1:1000. Secondary antibody: HRP Goat Anti-Rabbit IgG (H+L) at 1:5000. Lysates/proteins: 30ug per lane. Blocking buffer: 5% non-fat dry milk in TBST. Detection: ECL Enhanced Kit. Exposure time: 120s.

实验步骤

访问官网浏览详情: www.ablybio.cn