

RTF1 Rabbit pAb

货号: **AYP20989**

产品信息

反应	Human,Mouse
宿主	Rabbit
克隆性	Polyclonal
预测反应	
应用	WB
推荐浓度	WB: 1:500 - 1:2000
理论分子量	80kDa
实测分子量	100kDa
形式	Liquid
保存条件	Store at -20°C. Avoid freeze / thaw cycles. Buffer: PBS with 0.01% thiomersal,50% glycerol,pH7.3.
偶联物	Unconjugated
阳性对照	A-549,HeLa,Jurkat,SW620,COS-7
细胞定位	nucleolus,nucleoplasm
纯化	Affinity purification

抗原信息

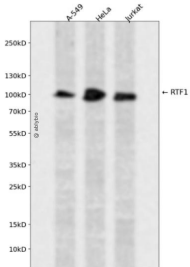
抗原信息	A synthetic peptide corresponding to a sequence within amino acids 300-400 of human RTF1 (NP_055953.3).
序列	LAKKQLKTSEVYSDDEEEEDDKSSEKSDRSSRTSSSDEEEKEEIPPKSQPVSLPEELNRVRLSRHKLERWCHMPFFAK TVTGCVFVRIGIGNHNSKPVY

靶点信息

研究背景	This locus may represent a gene involved in regulation of transcription elongation and chromatin remodeling, based on studies of similar proteins in other organisms. The encoded protein may bind single-stranded DNA. [provided by RefSeq, Sep 2010]
基因ID	23168

基因名	RTF1
Swiss	Q92541
别名	GTL7;KIAA0252;RTF1

产品验证



Western blot analysis of RTF1 expressed in A-549, HeLa, Jurkat using RTF1 Rabbit pAb at 1:1000. Secondary antibody: HRP Goat Anti-Rabbit IgG (H+L) at 1:5000. Lysates/proteins: 30ug per lane. Blocking buffer: 5% non-fat dry milk in TBST. Detection: ECL Enhanced Kit. Exposure time: 120s.

实验步骤

访问官网浏览详情: www.ablybio.cn