

CLCC1 Rabbit pAb

货号: **AYP20988**

产品信息

反应	Human,Mouse
宿主	Rabbit
克隆性	Polyclonal
预测反应	
应用	WB IHC
推荐浓度	WB: 1:500 - 1:2000 IHC: 1:50 - 1:200
理论分子量	
实测分子量	62kDa
形式	Liquid
保存条件	Store at -20°C. Avoid freeze / thaw cycles. Buffer: PBS with 0.01% thiomersal,50% glycerol,pH7.3.
偶联物	Unconjugated
阳性对照	U-87MG,22Rv1,Mouse spleen
细胞定位	endoplasmic reticulum,nuclear membrane
纯化	Affinity purification

抗原信息

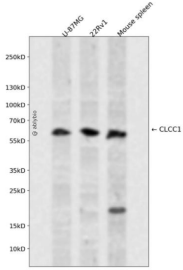
抗原信息	Recombinant fusion protein containing a sequence corresponding to amino acids 302-501 of human CLCC 1 (NP_055942.1).
序列	GAGKSVHVLRHIGGPESEPPQALRPRDRRRQEEIDYRPDGGAGDADFHYRGQMGPTTEQGPYAKTYEGRREILRERDVDLRFQGTGNKSPEVLRADFVDPDAEAREHPTVVPSHKSPVLDTKPKETGGILGEGTPEKESSTESSQSAKPVSGQDTSNGTEGSPA AEKAQLKSEAAGSPDQGSTYSPARGVAGPRGQDPVSSPCG

靶点信息

研究背景	Seems to act as a chloride ion channel. Plays a role in retina development.
基因ID	23155
基因名	CLCC1

Swiss	Q96S66
别名	MCLC;CLCC1

产品验证



Western blot analysis of CLCC1 expressed in U-87MG,22Rv1,Mouse spleen using CLCC1 Rabbit pAb at 1:1000. Secondary antibody: HRP Goat Anti-Rabbit IgG (H+L) at 1:5000. Lysates/proteins: 30ug per lane. Blocking buffer: 5% non-fat dry milk in TBST. Detection: ECL Enhanced Kit. Exposure time: 120s.

实验步骤

访问官网浏览详情: www.ablybio.cn