

SPG20 Rabbit pAb

货号: **AYP20985**

产品信息

反应	Human,Mouse,Rat
宿主	Rabbit
克隆性	Polyclonal
预测反应	
应用	WB
推荐浓度	WB: 1:500 - 1:2000
理论分子量	72kDa
实测分子量	73kDa
形式	Liquid
保存条件	Store at -20°C. Avoid freeze / thaw cycles. Buffer: PBS with 0.01% thiomersal,50% glycerol,pH7.3.
偶联物	Unconjugated
阳性对照	K-562,HeLa,293T,Mouse liver,Mouse heart,Mouse brain,Rat spleen,Rat lung,Rat brain
细胞定位	cytoplasm,cytosol,lipid droplet,mitochondrial outer membrane,plasma membrane
纯化	Affinity purification

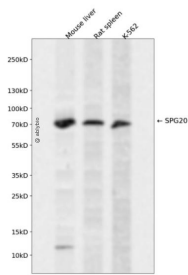
抗原信息

抗原信息	Recombinant fusion protein containing a sequence corresponding to amino acids 1-350 of human SPG20 (NP_055902.1).
序列	MEQEPQNGEPAEIKIIREAYKKAFLVVKGLNTDELGQKEEAKNYYKQGIGHLLRGISISSKESEHTGPGWESARQMQQKM KETLQNVTRTRLEILEKGLATSLQNDLQEVPKLYPEFPPKDMCEKLPEPQSFSSAPQHAEVNGNTSTPSAGAVAAPASLSLPS QSCPAEAPPAYTPQAAEGHYTVSYGTDSGEFSSVGEEFYRNHSQPPPLETLGLDADELILIPNGVQIFFVNPAGEVSAPSYP GYLRIVRFLDNSLDTVLRPPGFLQVCDWLYPLVPDRSPVLKCTAGAYMFPDTMLQAAGCFVGVVLSSELPEDDRELFD LLRQMSDLRLQANWNRAEEENEFAQI

靶点信息

研究背景	This gene encodes a protein containing a MIT (Microtubule Interacting and Trafficking molecule) domain, and is implicated in regulating endosomal trafficking and mitochondria function. The protein localizes to mitochondria and partially co-localizes with microtubules. Stimulation with epidermal growth factor (EGF) results in protein translocation to the plasma membrane, and the protein functions in the degradation and intracellular trafficking of EGF receptor. Multiple alternatively spliced variants, encoding the same protein, have been identified. Mutations associated with this gene cause autosomal recessive spastic paraplegia 20 (Troyer syndrome). [provided by RefSeq, Nov 2008]
基因ID	23111
基因名	SPART
Swiss	Q8N0X7
别名	SPARTIN;TAHCCP1;SPG20;spartin

产品验证



Western blot analysis of SPG20 expressed in Mouse liver, Rat spleen, K-562 using SPG20 Rabbit pAb at 1:1000. Secondary antibody: HRP Goat Anti-Rabbit IgG (H+L) at 1:5000. Lysates/proteins: 30ug per lane. Blocking buffer: 5% non-fat dry milk in TBST. Detection: ECL Enhanced Kit. Exposure time: 120s.

实验步骤

访问官网浏览详情: www.ablybio.cn