

LIMCH1 Rabbit pAb

货号: **AYP20984**

产品信息

反应	Human
宿主	Rabbit
克隆性	Polyclonal
预测反应	
应用	WB
推荐浓度	WB: 1:500 - 1:2000
理论分子量	
实测分子量	140kDa
形式	Liquid
保存条件	Store at -20°C. Avoid freeze / thaw cycles. Buffer: PBS with 0.01% thiomersal,50% glycerol,pH7.3.
偶联物	Unconjugated
阳性对照	LO2
细胞定位	cytoplasm
纯化	Affinity purification

抗原信息

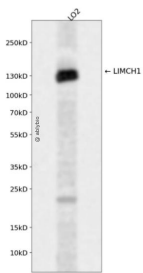
抗原信息	Recombinant fusion protein containing a sequence corresponding to amino acids 150-450 of human LIMCH1 (NP_001106189.1).
序列	LKEFEGLLAQMVKDIDDIESPKRSIRDGSDYIDCWDSERSDSLSPRRHGRDDSFDSLDFGSRSRQTSPDVLVLRGSSDG RGSDSEDLPHRKLDPVKKDDMSARRTSHGEPKSAVFPNQYLPNKSNTAYVPAPLRKKKAEREEYRKSWSSTATSPLGG ERPFRYGPRTVPVSDDAESTSMFDMRCEEEAAVQPHSRARQEQLQLINNLREEDDKWQDDLARWKSRRRSVSQDLIKK EEERKKMEKLLAGEDGTSERRRSIKTYREIVQEKRERRELHEAYKNARSQEEAEGILQQYIERF

靶点信息

研究背景	Actin stress fibers-associated protein that activates non-muscle myosin IIa. Activates the non-muscle myosin IIa complex by promoting the phosphorylation of its regulatory subunit MRLC/MYL9. Through the activation of non-muscle myosin IIa, positively regulates actin stress fibers assembly and stabilizes focal adhesions. It therefore negatively regulates cell spreading and cell migration.
------	--

基因ID	22998
基因名	LIMCH1
Swiss	Q9UPQ0
别名	LIMCH1A;LMO7B;LIMCH1

产品验证



Western blot analysis of LIMCH1 expressed in LO2 using LIMCH1 Rabbit pAb at 1:1000. Secondary antibody: HRP Goat Anti-Rabbit IgG (H+L) at 1:5000. Lysates/proteins: 30ug per lane. Blocking buffer: 5% non-fat dry milk in TBST. Detection: ECL Enhanced Kit. Exposure time: 120s.

实验步骤

访问官网浏览详情: www.ablybio.cn