

# CEP131 Rabbit pAb

货号: **AYP20983**

## 产品信息

反应	Human,Mouse
宿主	Rabbit
克隆性	Polyclonal
预测反应	
应用	WB
推荐浓度	<b>WB:</b> 1:500 - 1:2000
理论分子量	117kDa/121kDa/122kDa
实测分子量	145kDa
形式	Liquid
保存条件	Store at -20°C. Avoid freeze / thaw cycles. Buffer: PBS with 0.01% thiomersal,50% glycerol,pH7.3.
偶联物	Unconjugated
阳性对照	HeLa
细胞定位	centriole,centrosome,ciliary basal body,ciliary transition zone,cytosol,intercellular bridge,microtubule cytoskeleton
纯化	Affinity purification

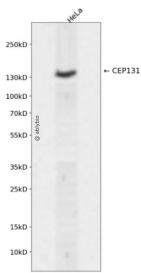
## 抗原信息

抗原信息	A synthetic peptide corresponding to a sequence within amino acids 1000-1083 of human CEP131 (NP_001306157.1).
序列	IRQEFEDRLAASEEETRQAKAELATLQARQQLEEEVHRRVKTALARKEEAVSSLRTQHEAAVKRADHLEELLEQHRPTPS TK

## 靶点信息

研究背景	Component of centriolar satellites contributing to the building of a complex and dynamic network required to regulate cilia/flagellum formation. In proliferating cells, MIB1-mediated ubiquitination induces its sequestration within centriolar satellites, precluding untimely cilia formation initiation. In contrast, during normal and ultraviolet or heat shock cellular stress-induced ciliogenesis, its non-ubiquitinated form is rapidly displaced from centriolar satellites and recruited to centrosome/basal bodies in a microtubule- and p38 MAPK-dependent manner. Acts also as a negative regulator of BBSome ciliary trafficking. Plays a role in sperm flagellar formation; may be involved in the regulation of intraflagellar transport (IFT and/or intramantle (IMT) trafficking, which are important for axoneme extension and/or cargo delivery to the nascent sperm tail (By similarity). Required for optimal cell proliferation and cell cycle progression; may play a role in the regulation of genome stability in non-ciliogenic cells. Involved in centriole duplication (By similarity). Required for CEP152, WDR62 and CEP63 centrosomal localization and promotes the centrosomal localization of CDK2. Essential for maintaining proper centriolar satellite integrity.
基因ID	22994
基因名	CEP131
Swiss	Q9UPN4
别名	AZ1;AZI1;ZA1;CEP131

## 产品验证



Western blot analysis of CEP131 expressed in HeLa using CEP131 Rabbit pAb at 1:1000. Secondary antibody: HRP Goat Anti-Rabbit IgG (H+L) at 1:5000. Lysates/proteins: 30ug per lane. Blocking buffer: 5% non-fat dry milk in TBST. Detection: ECL Enhanced Kit. Exposure time: 120s.

## 实验步骤

访问官网浏览详情: [www.ablybio.cn](http://www.ablybio.cn)