

KIN Rabbit pAb

货号: **AYP20981**

产品信息

反应	Human,Mouse,Rat
宿主	Rabbit
克隆性	Polyclonal
预测反应	
应用	WB
推荐浓度	WB: 1:500 - 1:2000
理论分子量	43kDa/45kDa
实测分子量	45kDa
形式	Liquid
保存条件	Store at -20°C. Avoid freeze / thaw cycles. Buffer: PBS with 0.01% thiomersal,50% glycerol,pH7.3.
偶联物	Unconjugated
阳性对照	PC-3,HeLa,BxPC-3,Mouse testis,Rat thymus,Rat testis
细胞定位	cytoplasm,nuclear matrix,nucleoplasm,nucleus
纯化	Affinity purification

抗原信息

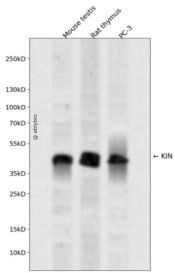
抗原信息	Recombinant fusion protein containing a sequence corresponding to amino acids 180-270 of human KIN (NP_036443.1).
序列	GLEGKEQEVPTFTELSRENDEEKVTFNLSKGACSSSGATSSKSSTLGPALKTIGSSASVVRKQSSQSSQSKKKKKSA LDEIMEIEEE

靶点信息

研究背景	The protein encoded by this gene is a nuclear protein that forms intranuclear foci during proliferation and is redistributed in the nucleoplasm during the cell cycle. Short-wave ultraviolet light provokes the relocalization of the protein, suggesting its participation in the cellular response to DNA damage. Originally selected based on protein-binding with RecA antibodies, the mouse protein presents a limited similarity with a functional domain of the bacterial RecA protein, a characteristic shared by this human ortholog. Alternative splicing of this gene results in multiple transcript variants. [provided by RefSeq, Jan 2012]
------	---

基因ID	22944
基因名	KIN
Swiss	O60870
别名	BTCD;KIN17;Rts2;KIN

产品验证



Western blot analysis of KIN expressed in Mouse testis,Rat thymus,PC-3 using KIN Rabbit pAb at 1:1000. Secondary antibody: HRP Goat Anti-Rabbit IgG (H+L) at 1:5000. Lysates/proteins: 30ug per lane. Blocking buffer: 5% non-fat dry milk in TBST. Detection: ECL Enhanced Kit. Exposure time: 120s.

实验步骤

访问官网浏览详情: www.ablybio.cn