

# ELL2 Rabbit pAb

货号: **AYP20980**

## 产品信息

反应	Human,Mouse
宿主	Rabbit
克隆性	Polyclonal
预测反应	
应用	WB
推荐浓度	<b>WB:</b> 1:500 - 1:2000
理论分子量	
实测分子量	72kDa
形式	Liquid
保存条件	Store at -20°C. Avoid freeze / thaw cycles. Buffer: PBS with 0.01% thiomersal,50% glycerol,pH7.3.
偶联物	Unconjugated
阳性对照	BxPC-3,Mouse testis,Mouse liver,Mouse brain
细胞定位	nucleoplasm,transcription elongation factor complex
纯化	Affinity purification

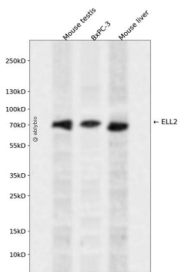
## 抗原信息

抗原信息	Recombinant fusion protein containing a sequence corresponding to amino acids 253-352 of human ELL2 (NP_036213.2).
序列	SKDLSYTLKDYVFKELQRDWPGYSEIDRRSLESVLSRKLNPSQNAAGTSRSESPVCSSRDAVSSPQKRLLDSEFIDPLMNK KARISHLTNRVPPTLNGHL

## 靶点信息

研究背景	Elongation factor component of the super elongation complex (SEC, a complex required to increase the catalytic rate of RNA polymerase II transcription by suppressing transient pausing by the polymerase at multiple sites along the DNA. Component of the little elongation complex (LEC, a complex required to regulate small nuclear RNA (snRNA) gene transcription by RNA polymerase II and III. Plays a role in immunoglobulin secretion in plasma cells: directs efficient alternative mRNA processing, influencing both proximal poly(A) site choice and exon skipping, as well as immunoglobulin heavy chain (IgH) alternative processing. Probably acts by regulating histone modifications accompanying transition from membrane-specific to secretory IgH mRNA expression.
基因ID	22936
基因名	ELL2
Swiss	O00472
别名	ELL2

## 产品验证



Western blot analysis of ELL2 expressed in Mouse testis, BxPC-3, Mouse liver using ELL2 Rabbit pAb at 1:1000. Secondary antibody: HRP Goat Anti-Rabbit IgG (H+L) at 1:5000. Lysates/proteins: 30ug per lane. Blocking buffer: 5% non-fat dry milk in TBST. Detection: ECL Enhanced Kit. Exposure time: 120s.

## 实验步骤

访问官网浏览详情: [www.ablybio.cn](http://www.ablybio.cn)