

CLCA4 Rabbit pAb

货号: **AYP20977**

产品信息

反应	Human,Rat
宿主	Rabbit
克隆性	Polyclonal
预测反应	
应用	WB
推荐浓度	WB: 1:500 - 1:2000
理论分子量	25kDa/101kDa
实测分子量	101kDa
形式	Liquid
保存条件	Store at -20°C. Avoid freeze / thaw cycles. Buffer: PBS with 0.01% thiomersal,50% glycerol,pH7.3.
偶联物	Unconjugated
阳性对照	HeLa,293T,Rat uterus
细胞定位	
纯化	Affinity purification

抗原信息

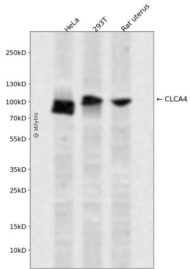
抗原信息	Recombinant fusion protein containing a sequence corresponding to amino acids 22-150 of human CLCA4 (NP_036260.2).
序列	SFIKLNNGFEDIVIVIDPSVPEDEKIEQIEDMVTASTYLFEATEKRFFFKNVSILIPENWKENPQYKRPKHENHKHADVIVA PPTLPGRDEPYTKQFTECGEKGEYIHFTPDLGKKQNEYGPPG

靶点信息

研究背景	The protein encoded by this gene belongs to the calcium sensitive chloride conductance protein family. To date, all members of this gene family map to the same site on chromosome 1p31-p22 and share high degrees of homology in size, sequence and predicted structure, but differ significantly in their tissue distributions. Alternative splicing results in multiple transcript variants, only one of which is thought to be protein coding. [provided by RefSeq, Dec 2008]
基因ID	22802

基因名	CLCA4
Swiss	Q14CN2
别名	CaCC;CaCC2;CLCA4

产品验证



Western blot analysis of CLCA4 expressed in HeLa, 293T, Rat uterus using CLCA4 Rabbit pAb at 1:1000. Secondary antibody: HRP Goat Anti-Rabbit IgG (H+L) at 1:5000. Lysates/proteins: 30ug per lane. Blocking buffer: 5% non-fat dry milk in TBST. Detection: ECL Enhanced Kit. Exposure time: 120s.

实验步骤

访问官网浏览详情: www.ablybio.cn