

RRP1 Rabbit pAb

货号: **AYP20969**

产品信息

反应	Human,Mouse,Rat
宿主	Rabbit
克隆性	Polyclonal
预测反应	
应用	WB
推荐浓度	WB: 1:500 - 1:2000
理论分子量	52kDa
实测分子量	53kDa
形式	Liquid
保存条件	Store at -20°C. Avoid freeze / thaw cycles. Buffer: PBS with 0.01% thiomersal,50% glycerol,pH7.3.
偶联物	Unconjugated
阳性对照	HeLa,A-549,293T,Mouse testis,Mouse brain,Rat brain
细胞定位	nucleolus,nucleus
纯化	Affinity purification

抗原信息

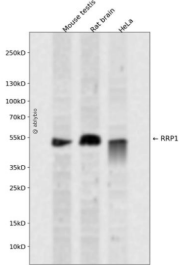
抗原信息	Recombinant fusion protein containing a sequence corresponding to amino acids 26-253 of human RRP1 (NP_003674.1).
序列	DRAVRKLRKYIVARTQRAAGGFTHDELLKVVWGLFYCMWMQDKPLLQEELGRTISQLVHAFQTTEAQLFLQAFWQTMN REWTGIDRLRLDKFYMLMRMVLNESLKVLMQGWEEERQIEELLELLMTEILHPSSQAPNGVKSHFIEIFLEELTKVGAEELTA DQNLKFIDPFCRIAARTKDSLVLNNITRGIFETIVEQAPLAIEDLLNELDTQDEEVASDSDESSEG

靶点信息

研究背景	The protein encoded by this gene is the putative homolog of the yeast ribosomal RNA processing protein RRP1. The encoded protein is involved in the late stages of nucleologenesis at the end of mitosis, and may be required for the generation of 28S rRNA. [provided by RefSeq, Jul 2008]
基因ID	8568

基因名	RRP1
Swiss	P56182
别名	D21S2056E;NNP-1;NOP52;RRP1A;RRP1

产品验证



Western blot analysis of RRP1 expressed in Mouse testis,Rat brain,HeLa using RRP1 Rabbit pAb at 1:1000. Secondary antibody: HRP Goat Anti-Rabbit IgG (H+L) at 1:5000. Lysates/proteins: 30ug per lane. Blocking buffer: 5% non-fat dry milk in TBST. Detection: ECL Enhanced Kit. Exposure time: 120s.

实验步骤

访问官网浏览详情: www.ablybio.cn