

COG1 Rabbit pAb

货号: **AYP20968**

产品信息

反应	Human,Mouse,Rat
宿主	Rabbit
克隆性	Polyclonal
预测反应	
应用	WB IHC
推荐浓度	WB: 1:500 - 1:2000 IHC: 1:50 - 1:200
理论分子量	
实测分子量	109kDa
形式	Liquid
保存条件	Store at -20°C. Avoid freeze / thaw cycles. Buffer: PBS with 0.01% thiomersal,50% glycerol,pH7.3.
偶联物	Unconjugated
阳性对照	22Rv1
细胞定位	Golgi apparatus,Golgi transport complex
纯化	Affinity purification

抗原信息

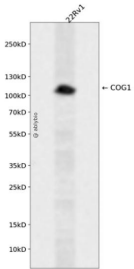
抗原信息	A synthetic peptide corresponding to a sequence within amino acids 900-993 of human COG1 (NP_06118 4.1).
序列	NILPLASSQIRFGLLPLSMTSTRKAKSTRNIETKAQVVPPARSTAGDPTVPGSLFRQLVSEEDNTSAPSLFKLGWLSSMTK

靶点信息

研究背景	The protein encoded by this gene is one of eight proteins (Cog1-8) which form a Golgi-localized complex (COG) required for normal Golgi morphology and function. It is thought that this protein is required for steps in the normal medial and trans Golgi-associated processing of glycoconjugates and plays a role in the organization of the Golgi-localized complex. [provided by RefSeq, Jul 2008]
基因ID	9382

基因名	COG1
Swiss	Q8WTW3
别名	CDG2G;LDLB;COG1

产品验证



Western blot analysis of COG1 expressed in 22Rv1 using COG1 Rabbit pAb at 1:1000. Secondary antibody : HRP Goat Anti-Rabbit IgG (H+L) at 1:5000. Lysates/proteins: 30ug per lane. Blocking buffer: 5% non-fat dry milk in TBST. Detection: ECL Enhanced Kit. Exposure time: 120s.

实验步骤

访问官网浏览详情: www.ablybio.cn