

TOM1L1 Rabbit pAb

货号: **AYP20963**

产品信息

反应	Human,Mouse,Rat
宿主	Rabbit
克隆性	Polyclonal
预测反应	
应用	WB
推荐浓度	WB: 1:500 - 1:2000
理论分子量	38kDa/44kDa/52kDa
实测分子量	53kDa
形式	Liquid
保存条件	Store at -20°C. Avoid freeze / thaw cycles. Buffer: PBS with 0.01% thiomersal,50% glycerol,pH7.3.
偶联物	Unconjugated
阳性对照	293T,HT-29,SGC-7901,Mouse kidney,Rat kidney
细胞定位	
纯化	Affinity purification

抗原信息

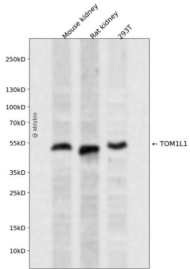
抗原信息	A synthetic peptide corresponding to a sequence within amino acids 250-350 of human TOM1L1 (NP_005477.2).
序列	QERIMDLLVVVENEDVTVELIQVNEDLNNAILGYERFTRNQQRILEQNKQKEATNTTSEPSAPSQDLLDLSPSPRMPRTL GELNTMNNQLSGLNFSLPS

靶点信息

研究背景	Probable adapter protein involved in signaling pathways. Interacts with the SH2 and SH3 domains of various signaling proteins when it is phosphorylated. May promote FYN activation, possibly by disrupting intramolecular SH3-dependent interactions (By similarity).
基因ID	10040

基因名	TOM1L1
Swiss	O75674
别名	SRCASM;TOM1L1

产品验证



Western blot analysis of TOM1L1 expressed in Mouse kidney,Rat kidney,293T using TOM1L1 Rabbit pAb at 1:1000. Secondary antibody: HRP Goat Anti-Rabbit IgG (H+L) at 1:5000. Lysates/proteins: 30ug per lane. Blocking buffer: 5% non-fat dry milk in TBST. Detection: ECL Enhanced Kit. Exposure time: 120s.

实验步骤

访问官网浏览详情: www.ablybio.cn