

NPM3 Rabbit pAb

货号: **AYP20952**

产品信息

反应	Human
宿主	Rabbit
克隆性	Polyclonal
预测反应	
应用	WB
推荐浓度	WB: 1:500 - 1:2000
理论分子量	19kDa
实测分子量	19kDa
形式	Liquid
保存条件	Store at -20°C. Avoid freeze / thaw cycles. Buffer: PBS with 0.01% thiomersal, 50% glycerol, pH7.3.
偶联物	Unconjugated
阳性对照	HeLa, Raji
细胞定位	actin cytoskeleton, cytoplasm, cytosol, nucleolus, nucleoplasm
纯化	Affinity purification

抗原信息

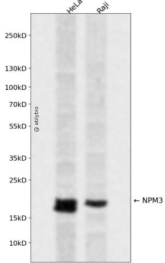
抗原信息	Recombinant fusion protein containing a sequence corresponding to amino acids 30-140 of human NPM3 (NP_008924.1).
序列	APVTMDSFFFGCELSGHTRSFTFKVEEEDDAEHLALTMLCLTEGAKDECNVVEVARNHDHQEIAVPVANLKLSCQPMLSLDDFQLQPPVTFRLKSGSGPVTRITGRHQIV

靶点信息

研究背景	The protein encoded by this gene is related to the nuclear chaperone phosphoproteins, nucleoplasmin and nucleophosmin. This protein is strongly expressed in diverse cell types where it localizes primarily to the nucleus. Based on its similarity to nucleoplasmin and nucleophosmin, this protein likely functions as a molecular chaperone in the cell nucleus. [provided by RefSeq, Oct 2008]
基因ID	10360

基因名	NPM3
Swiss	O75607
别名	NPM3;PORMIN;TMEM123

产品验证



Western blot analysis of NPM3 expressed in HeLa,Raji using NPM3 Rabbit pAb at 1:1000. Secondary antibody: HRP Goat Anti-Rabbit IgG (H+L) at 1:5000. Lysates/proteins: 30ug per lane. Blocking buffer: 5% non-fat dry milk in TBST. Detection: ECL Enhanced Kit. Exposure time: 120s.

实验步骤

访问官网浏览详情: www.ablybio.cn