

— ABLYBIO, Help Your Research



GRHPR Rabbit pAb

货号: **AYP20939**

产品信息

反应	Human,Mouse,Rat
宿主	Rabbit
克隆性	Polyclonal
预测反应	
应用	WB IF/ICC
推荐浓度	WB: 1:500 - 1:2000 IF/ICC: 1:50 - 1:200
理论分子量	27kDa/35kDa
实测分子量	36kDa
形式	Liquid
保存条件	Store at -20°C. Avoid freeze / thaw cycles. Buffer: PBS with 0.01% thiomersal,50% glycerol,pH7.3.
偶联物	Unconjugated
阳性对照	PC-3,HepG2,293T,Mouse kidney
细胞定位	cytoplasm,cytosol,extracellular exosome,peroxisomal matrix
纯化	Affinity purification

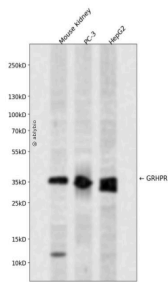
抗原信息

抗原信息	Recombinant fusion protein containing a sequence corresponding to amino acids 100-328 of human GRH PR (NP_036335.1).
------	--

靶点信息

研究背景	This gene encodes an enzyme with hydroxypyruvate reductase, glyoxylate reductase, and D-glycerate dehydrogenase enzymatic activities. The enzyme has widespread tissue expression and has a role in metabolism. Type II hyperoxaluria is caused by mutations in this gene. [provided by RefSeq, Jul 2008]
基因ID	9380
基因名	GRHPR
Swiss	Q9UBQ7 (https://www.uniprot.org/uniprotkb/Q9UBQ7/entry)
别名	GLXR, GLYD, PH2, GRHPR, GRHPR Rabbit pAb

产品验证



Western blot analysis of GRHPR expressed in Mouse kidney, PC-3, HepG2 using GRHPR Rabbit pAb at 1:1000. Secondary antibody: HRP Goat Anti-Rabbit IgG (H+L) at 1:5000. Lysates/proteins: 30ug per lane. Blocking buffer: 5% non-fat dry milk in TBST. Detection: ECL Enhanced Kit. Exposure time: 120s.

实验步骤

访问官网浏览详情: www.ablybio.cn (<https://www.ablybio.cn/www.ablybio.cn>)