

— ABLYBIO, Help Your Research



# MTMR1 Rabbit pAb

货号: **AYP20933**

## 产品信息

反应	Human,Mouse
宿主	Rabbit
克隆性	Polyclonal
预测反应	
应用	WB
推荐浓度	<b>WB:</b> 1:500 - 1:2000
理论分子量	
实测分子量	75kDa
形式	Liquid
保存条件	Store at -20°C. Avoid freeze / thaw cycles. Buffer: PBS with 0.01% thiomersal,50% glycerol,pH7.3.
偶联物	Unconjugated
阳性对照	U-87MG,Raji,22Rv1,Mouse heart,Mouse lung
细胞定位	cytoplasm,cytosol,plasma membrane
纯化	Affinity purification

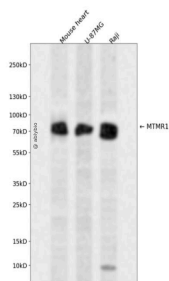
## 抗原信息

抗原信息	A synthetic peptide corresponding to a sequence within amino acids 300-400 of human MTMR1 (NP_003819.1).
------	--

## 靶点信息

研究背景	This gene encodes a member of the myotubularin related family of proteins. Members of this family contain the consensus sequence for the active site of protein tyrosine phosphatases. Alternatively spliced variants have been described but their biological validity has not been determined. [provided by RefSeq, Jul 2008]
基因ID	8776
基因名	MTMR1
Swiss	Q13613 ( <a href="https://www.uniprot.org/uniprotkb/Q13613/entry">https://www.uniprot.org/uniprotkb/Q13613/entry</a> )
别名	MTMR1,MTMR1 Rabbit pAb,Myotubularin-related protein 1,Phosphatidylinositol-3,5-bisphosphate 3-phosphatase

## 产品验证



Western blot analysis of MTMR1 expressed in Mouse heart,U-87MG,Raji using MTMR1 Rabbit pAb at 1:1000. Secondary antibody: HRP Goat Anti-Rabbit IgG (H+L) at 1:5000. Lysates/proteins: 30ug per lane. Blocking buffer: 5% non-fat dry milk in TBST. Detection: ECL Enhanced Kit. Exposure time: 120s.

## 实验步骤

访问官网浏览详情: [www.ablybio.cn](http://www.ablybio.cn) (<https://www.ablybio.cn/www.ablybio.cn>)