

# B4GALT3 Rabbit pAb

货号: AYP20924

## 产品信息

反应	Human,Mouse,Rat
宿主	Rabbit
克隆性	Polyclonal
预测反应	
应用	WB IHC
推荐浓度	<b>WB:</b> 1:500 - 1:2000 <b>IHC:</b> 1:100 - 1:200
理论分子量	15kDa/43kDa
实测分子量	44kDa
形式	Liquid
保存条件	Store at -20°C. Avoid freeze / thaw cycles. Buffer: PBS with 0.01% thiomersal,50% glycerol,pH7.3.
偶联物	Unconjugated
阳性对照	Mouse heart,Rat spleen,Rat kidney
细胞定位	
纯化	Affinity purification

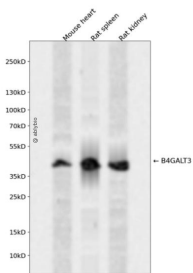
## 抗原信息

抗原信息	Recombinant fusion protein containing a sequence corresponding to amino acids 40-150 of human B4GALT3 (NP_003770.1).
序列	RDQGPTFDYSHPRDVYSNLSHLPGAPGGPPAPQGLPYCPERSPLLVGPSVSVFSPVPSLAEIVERNPRVEPGGRYPAGCE PRSRTAIIVPHRAREHHLRLLLLYHLHPFLQ

## 靶点信息

研究背景	This gene is one of seven beta-1,4-galactosyltransferase (beta4GalT) genes. They encode type II membrane-bound glycoproteins that appear to have exclusive specificity for the donor substrate UDP-galactose; a II transfer galactose in a beta1,4 linkage to similar acceptor sugars: GlcNAc, Glc, and Xyl. Each beta4GalT has a distinct function in the biosynthesis of different glycoconjugates and saccharide structures. As type II membrane proteins, they have an N-terminal hydrophobic signal sequence that directs the protein to the Golgi apparatus and which then remains uncleaved to function as a transmembrane anchor. By sequence similarity, the beta4GalTs form four groups: beta4GalT1 and beta4GalT2, beta4GalT3 and beta4GalT4, beta4GalT5 and beta4GalT6, and beta4GalT7. This gene encodes an enzyme that may be mainly involved in the synthesis of the first N-acetyllactosamine unit of poly-N-acetyllactosamine chains. Multiple alternatively spliced transcript variants encoding the same protein have been found for this gene. [provided by RefSeq, Dec 2010]
基因ID	8703
基因名	B4GALT3
Swiss	O60512
别名	B4GALT3;beta4Gal-T3;beta-1

## 产品验证



Western blot analysis of B4GALT3 expressed in Mouse heart, Rat spleen, Rat kidney using B4GALT3 Rabbit pAb at 1:1000. Secondary antibody: HRP Goat Anti-Rabbit IgG (H+L) at 1:5000. Lysates/proteins: 30ug per lane. Blocking buffer: 5% non-fat dry milk in TBST. Detection: ECL Enhanced Kit. Exposure time: 120s.

## 实验步骤

访问官网浏览详情: [www.ablybio.cn](http://www.ablybio.cn)