

CHRD Rabbit pAb

货号: **AYP20923**

产品信息

反应	Mouse,Rat
宿主	Rabbit
克隆性	Polyclonal
预测反应	
应用	WB
推荐浓度	WB: 1:500 - 1:2000
理论分子量	
实测分子量	102kDa
形式	Liquid
保存条件	Store at -20°C. Avoid freeze / thaw cycles. Buffer: PBS with 0.01% thiomersal,50% glycerol,pH7.3.
偶联物	Unconjugated
阳性对照	Mouse liver,Rat liver
细胞定位	extracellular space
纯化	Affinity purification

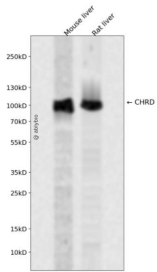
抗原信息

抗原信息	Recombinant fusion protein containing a sequence corresponding to amino acids 686-955 of human CHRD (NP_003732.2).
序列	PALAPAKPGGPGRRDPNTCFEGQQRPHGARWAPNYDPLCSLCTCQRRTVICDPVVCPPSPHPVQAPDQCCPVCPE KQDVRDLPLPRSRDPGEGCYFDGDRSWRAAGTRWHPVPPFGLIKCAVCTCKGGTGEVHCEKVQCPRLACAQPVRVN PTDCCKQCPVGSAGHPQLGDPMQADGPRGCRFAGQWFPESQSWHPSVPPFGEMSCITRCGAGVPHCERDDCSLPLS CGSGKESRCCSRCTAHRRPAPETRTDPELEKEAEGS

靶点信息

研究背景	This gene encodes a secreted protein that dorsalizes early vertebrate embryonic tissues by binding to and neutralizing TGF-beta-like bone morphogenetic proteins and sequestering them in latent complexes. The encoded protein may also have roles in organogenesis and during adulthood. It has been suggested that this gene could be a candidate gene for Cornelia de Lange syndrome. Reduced expression of this gene results in enhanced bone regeneration. Alternative splicing results in multiple transcript variants. Other alternative splice variants have been described but their full length sequence has not been determined. [provided by RefSeq, Jan 2015]
基因ID	8646
基因名	CHRD
Swiss	Q9H2X0
别名	CHRD

产品验证



Western blot analysis of CHRD expressed in Mouse liver, Rat liver using CHRD Rabbit pAb at 1:1000. Secondary antibody: HRP Goat Anti-Rabbit IgG (H+L) at 1:5000. Lysates/proteins: 30ug per lane. Blocking buffer: 5% non-fat dry milk in TBST. Detection: ECL Enhanced Kit. Exposure time: 120s.

实验步骤

访问官网浏览详情: www.ablybio.cn