

SLC9A3 Rabbit pAb

货号: AYP20897

产品信息

反应	Rat
宿主	Rabbit
克隆性	Polyclonal
预测反应	
应用	WB
推荐浓度	WB: 1:500 - 1:2000
理论分子量	
实测分子量	100kDa
形式	Liquid
保存条件	Store at -20°C. Avoid freeze / thaw cycles. Buffer: PBS with 0.01% thiomersal, 50% glycerol, pH7.3.
偶联物	Unconjugated
阳性对照	Rat kidney
细胞定位	apical plasma membrane, cell surface, extracellular exosome, plasma membrane
纯化	Affinity purification

抗原信息

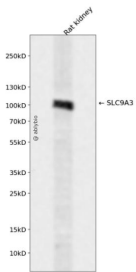
抗原信息	Recombinant fusion protein containing a sequence corresponding to amino acids 460-600 of human SLC9A3 (NP_004165.2).
序列	VQWLKVKRSEHREPLNEKLHGAFDHILSAIEDISGQIGHNYLRDKWSHFDRKFLSRVLMRRSAQKSRDRILNVFHELNLKDAISYVAEGERRGSLAFIRSPSTDNVNVDFTPRSSTVEASVSYLLRENVSAVCLDMQS

靶点信息

研究背景	The protein encoded by this gene is an epithelial brush border Na/H exchanger that uses an inward sodium ion gradient to expel acids from the cell. Defects in this gene are a cause of congenital secretory sodium diarrhea. Pseudogenes of this gene exist on chromosomes 10 and 22. [provided by RefSeq, Mar 2016]
基因ID	6550

基因名	SLC9A3
Swiss	P48764
别名	DIAR8;NHE-3;NHE3;SLC9A3

产品验证



Western blot analysis of SLC9A3 expressed in Rat kidney using SLC9A3 Rabbit pAb at 1:1000. Secondary antibody: HRP Goat Anti-Rabbit IgG (H+L) at 1:5000. Lysates/proteins: 30ug per lane. Blocking buffer: 5% non-fat dry milk in TBST. Detection: ECL Enhanced Kit. Exposure time: 120s.

实验步骤

访问官网浏览详情: www.ablybio.cn