

# SLC6A8 Rabbit pAb

货号: **AYP20896**

## 产品信息

反应	Human,Mouse
宿主	Rabbit
克隆性	Polyclonal
预测反应	
应用	WB
推荐浓度	<b>WB:</b> 1:500 - 1:2000
理论分子量	30kDa/58kDa/70kDa/80kDa
实测分子量	65kDa
形式	Liquid
保存条件	Store at -20°C. Avoid freeze / thaw cycles. Buffer: PBS with 0.01% thiomersal,50% glycerol,pH7.3.
偶联物	Unconjugated
阳性对照	293T,U-87MG,Mouse brain
细胞定位	apical plasma membrane,plasma membrane
纯化	Affinity purification

## 抗原信息

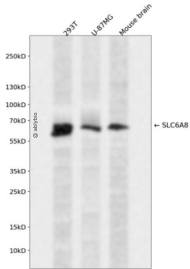
抗原信息	Recombinant fusion protein containing a sequence corresponding to amino acids 539-635 of human SLC6A8 (NP_005620.1).
序列	VVYYEPLVYNNTYVYPWWGEAMGWAFALSSMLCVPLHLLGCLLRKGTMAERWQHLLTQPIWGLHHLEYRAQDADVRGLTTLTPVSESSKVVVSV

## 靶点信息

研究背景	The protein encoded by this gene is a plasma membrane protein whose function is to transport creatine into and out of cells. Defects in this gene can result in X-linked creatine deficiency syndrome. Multiple transcript variants encoding different isoforms have been found for this gene. [provided by RefSeq, Dec 2008]
基因ID	6535

基因名	SLC6A8
Swiss	P48029
别名	CCDS1;CRT;CRTR;CT1;CTR5;SLC6A8

## 产品验证



Western blot analysis of SLC6A8 expressed in 293T,U-87MG,Mouse brain using SLC6A8 Rabbit pAb at 1:1000. Secondary antibody: HRP Goat Anti-Rabbit IgG (H+L) at 1:5000. Lysates/proteins: 30ug per lane . Blocking buffer: 5% non-fat dry milk in TBST. Detection: ECL Enhanced Kit. Exposure time: 120s.

## 实验步骤

访问官网浏览详情: [www.ablybio.cn](http://www.ablybio.cn)