

# SCML1 Rabbit pAb

货号: **AYP20894**

## 产品信息

反应	Rat
宿主	Rabbit
克隆性	Polyclonal
预测反应	
应用	WB
推荐浓度	<b>WB:</b> 1:500 - 1:2000
理论分子量	
实测分子量	37kDa
形式	Liquid
保存条件	Store at -20°C. Avoid freeze / thaw cycles. Buffer: PBS with 0.01% thiomersal, 50% glycerol, pH7.3.
偶联物	Unconjugated
阳性对照	Rat liver
细胞定位	nucleus
纯化	Affinity purification

## 抗原信息

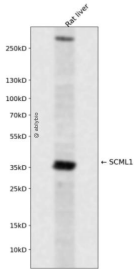
抗原信息	Recombinant fusion protein containing a sequence corresponding to amino acids 50-200 of human SCML1 (NP_006737.2).
序列	KKIDVIRRKVSKIQRFHARSLWTNHKRYGYKKHSYRLVKKLLQKMKKNEVYETFSYPESYSPTLPVSRRENNSPSNLPRPSFCMEEYQRAELEEDPILSRTPSPVHPSDFSEHNCQPYASDGATYGSSSGLCLGNPRADSIHNTYSTDH

## 靶点信息

研究背景	Putative Polycomb group (PcG) protein. PcG proteins act by forming multiprotein complexes, which are required to maintain the transcriptionally repressive state of homeotic genes throughout development. May be involved in spermatogenesis during sexual maturation (By similarity).
基因ID	6322

基因名	SCML1
Swiss	Q9UN30
别名	SCML1

## 产品验证



Western blot analysis of SCML1 expressed in Rat liver using SCML1 Rabbit pAb at 1:1000. Secondary antibody: HRP Goat Anti-Rabbit IgG (H+L) at 1:5000. Lysates/proteins: 30ug per lane. Blocking buffer: 5% non-fat dry milk in TBST. Detection: ECL Enhanced Kit. Exposure time: 120s.

## 实验步骤

访问官网浏览详情: [www.ablybio.cn](http://www.ablybio.cn)