

# RPS23 Rabbit pAb

货号: **AYP20893**

## 产品信息

反应	Human
宿主	Rabbit
克隆性	Polyclonal
预测反应	
应用	WB
推荐浓度	<b>WB:</b> 1:500 - 1:2000
理论分子量	
实测分子量	16kDa
形式	Liquid
保存条件	Store at -20°C. Avoid freeze / thaw cycles. Buffer: PBS with 0.01% thiomersal, 50% glycerol, pH7.3.
偶联物	Unconjugated
阳性对照	Raji, U-87MG
细胞定位	cytoplasm, cytosol, cytosolic ribosome, endoplasmic reticulum, nucleoplasm, rough endoplasmic reticulum
纯化	Affinity purification

## 抗原信息

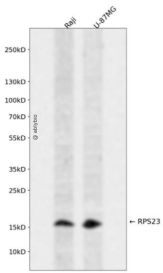
抗原信息	Recombinant fusion protein containing a sequence corresponding to amino acids 40-120 of human RPS23 (NP_001016.1).
序列	PFGGASHAKGIVLEKVGVEAKQPNSAIRKCVRVQLIKNGKKITAFVPNDGCLNFIEENDEVLVAGFGRKGHAVGDIPIGVRF

## 靶点信息

研究背景	Ribosomes, the organelles that catalyze protein synthesis, consist of a small 40S subunit and a large 60S subunit. Together these subunits are composed of 4 RNA species and approximately 80 structurally distinct proteins. This gene encodes a ribosomal protein that is a component of the 40S subunit. The protein belongs to the S12P family of ribosomal proteins. It is located in the cytoplasm. The protein shares significant amino acid similarity with <i>S. cerevisiae</i> ribosomal protein S28. As is typical for genes encoding ribosomal proteins, there are multiple processed pseudogenes of this gene dispersed through the genome. [provided by RefSeq, Jul 2008]
------	---

基因ID	6228
基因名	RPS23
Swiss	P62266
别名	S23;RPS23

## 产品验证



Western blot analysis of RPS23 expressed in Raji,U-87MG using RPS23 Rabbit pAb at 1:1000. Secondary antibody: HRP Goat Anti-Rabbit IgG (H+L) at 1:5000. Lysates/proteins: 30ug per lane. Blocking buffer: 5% non-fat dry milk in TBST. Detection: ECL Enhanced Kit. Exposure time: 120s.

## 实验步骤

访问官网浏览详情: [www.ablybio.cn](http://www.ablybio.cn)