

# PDE6G Rabbit pAb

货号: **AYP20884**

## 产品信息

反应	Human,Mouse,Rat
宿主	Rabbit
克隆性	Polyclonal
预测反应	
应用	WB IF/ICC
推荐浓度	<b>WB:</b> 1:500 - 1:2000 <b>IF/ICC:</b> 1:50 - 1:200
理论分子量	
实测分子量	13kDa
形式	Liquid
保存条件	Store at -20°C. Avoid freeze / thaw cycles. Buffer: PBS with 0.01% thiomersal,50% glycerol,pH7.3.
偶联物	Unconjugated
阳性对照	Mouse liver,Mouse eye,Rat spleen
细胞定位	photoreceptor outer segment membrane,plasma membrane
纯化	Affinity purification

## 抗原信息

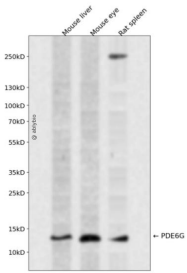
抗原信息	Recombinant fusion protein containing a sequence corresponding to amino acids 1-87 of human PDE6G (NP_002593.1).
序列	MNLEPPKAEFRSATRVAGGPVTPRKGPPKFKRQTRQFKSKPPKGGVQGFDDIPGMEGLGTDITVICPWEAFNHLELHELAQYGII

## 靶点信息

研究背景	This gene encodes the gamma subunit of cyclic GMP-phosphodiesterase, which is composed of alpha- and beta- catalytic subunits and two identical, inhibitory gamma subunits. This gene is expressed in rod photoreceptors and functions in the phototransduction signaling cascade. It is also expressed in a variety of other tissues, and has been shown to regulate the c-Src protein kinase and G-protein-coupled receptor kinase 2. Alternative splicing results in multiple transcript variants. [provided by RefSeq, Feb 2009]
------	--

基因ID	5148
基因名	PDE6G
Swiss	P18545
别名	PDEG;RP57;PDE6G

## 产品验证



Western blot analysis of PDE6G expressed in Mouse liver, Mouse eye, Rat spleen using PDE6G Rabbit pAb at 1:1000. Secondary antibody: HRP Goat Anti-Rabbit IgG (H+L) at 1:5000. Lysates/proteins: 30ug per lane. Blocking buffer: 5% non-fat dry milk in TBST. Detection: ECL Enhanced Kit. Exposure time: 120s.

## 实验步骤

访问官网浏览详情: [www.ablybio.cn](http://www.ablybio.cn)