

PAX1 Rabbit pAb

货号: **AYP20882**

产品信息

反应	Human
宿主	Rabbit
克隆性	Polyclonal
预测反应	
应用	WB
推荐浓度	WB: 1:500 - 1:2000
理论分子量	45kDa/53kDa/55kDa
实测分子量	43kDa
形式	Liquid
保存条件	Store at -20°C. Avoid freeze / thaw cycles. Buffer: PBS with 0.01% thiomersal, 50% glycerol, pH7.3.
偶联物	Unconjugated
阳性对照	Raji
细胞定位	
纯化	Affinity purification

抗原信息

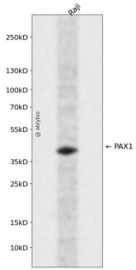
抗原信息	A synthetic peptide corresponding to a sequence within amino acids 300-400 of human PAX1 (NP_006183.2).
序列	TFMEQTGALAGSEGTAYSKMEDWAGVNRATFPATPAVNGLEKPALEADIKYTSASTLSAVGGFLPACAYPASNQHGVSAPGGGGLAPGPPWPPAQGPP

靶点信息

研究背景	This gene is a member of the paired box (PAX) family of transcription factors. Members of the PAX family typically contain a paired box domain and a paired-type homeodomain. These genes play critical roles during fetal development. This gene plays a role in pattern formation during embryogenesis and may be essential for development of the vertebral column. This gene is silenced by methylation in ovarian and cervical cancers and may be a tumor suppressor gene. Mutations in this gene are also associated with vertebral malformations. [provided by RefSeq, Mar 2012]
------	---

基因ID	5075
基因名	PAX1
Swiss	P15863
别名	HUP48;OFC2;PAX1

产品验证



Western blot analysis of PAX1 expressed in Raji using PAX1 Rabbit pAb at 1:1000. Secondary antibody: HRP Goat Anti-Rabbit IgG (H+L) at 1:5000. Lysates/proteins: 30ug per lane. Blocking buffer: 5% non-fat dry milk in TBST. Detection: ECL Enhanced Kit. Exposure time: 120s.

实验步骤

访问官网浏览详情: www.ablybio.cn