

LAD1 Rabbit pAb

货号: **AYP20876**

产品信息

反应	Human,Mouse,Rat
宿主	Rabbit
克隆性	Polyclonal
预测反应	
应用	WB IHC
推荐浓度	WB: 1:500 - 1:2000 IHC: 1:100 - 1:200
理论分子量	
实测分子量	54kDa
形式	Liquid
保存条件	Store at -20°C. Avoid freeze / thaw cycles. Buffer: PBS with 0.01% thiomersal,50% glycerol,pH7.3.
偶联物	Unconjugated
阳性对照	HeLa
细胞定位	actin cytoskeleton,basement membrane,extracellular exosome
纯化	Affinity purification

抗原信息

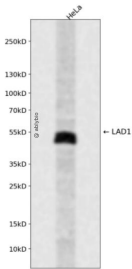
抗原信息	Recombinant fusion protein containing a sequence corresponding to amino acids 40-200 of human LAD1 (NP_005549.2).
序列	TTDDEAPRLSQNGDRQASASERLPSVEEAQVPLPPASKDEDEDIQSILRTRQERRQRRQVVEAAQAPIQERLEAEEGRN SLSPVQATQKPLVSKKELEIPRRRLSREQRGPWALEEESLVGREPEERKKGVPKSPVLEKSSMPKKTAPEKSLVSDKT

靶点信息

研究背景	The protein encoded by this gene may be an anchoring filament that is a component of basement membranes. It may contribute to the stability of the association of the epithelial layers with the underlying mesenchyme. [provided by RefSeq, Jul 2008]
基因ID	3898

基因名	LAD1
Swiss	O00515
别名	LadA;LAD1

产品验证



Western blot analysis of LAD1 expressed in HeLa using LAD1 Rabbit pAb at 1:1000. Secondary antibody: HRP Goat Anti-Rabbit IgG (H+L) at 1:5000. Lysates/proteins: 30ug per lane. Blocking buffer: 5% non-fat dry milk in TBST. Detection: ECL Enhanced Kit. Exposure time: 120s.

实验步骤

访问官网浏览详情: www.ablybio.cn