

# FCGR1B Rabbit pAb

货号: **AYP20862**

## 产品信息

反应	Human,Mouse
宿主	Rabbit
克隆性	Polyclonal
预测反应	
应用	WB IHC
推荐浓度	<b>WB:</b> 1:500 - 1:2000 <b>IHC:</b> 1:50 - 1:200
理论分子量	
实测分子量	27kDa
形式	Liquid
保存条件	Store at -20°C. Avoid freeze / thaw cycles. Buffer: PBS with 0.01% thiomersal,50% glycerol,pH7.3.
偶联物	Unconjugated
阳性对照	Mouse plasma
细胞定位	plasma membrane
纯化	Affinity purification

## 抗原信息

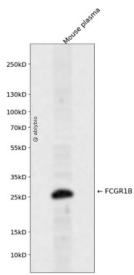
抗原信息	A synthetic peptide corresponding to a sequence within amino acids 100-200 of human FCGR1B (NP_001017986.1).
序列	IHRGWLLLQVSSRVFMEGEPLALRCHAWKDKLVYNVLYYRNGKAFKFFHWNSNLTKTNISHNGTYHCSGMGKHRYTSA GISQYTVKGLQLPTPVWFHVL

## 靶点信息

研究背景	Three distinct, but closely related classes of receptors that bind the Fc portion of IgG have been identified (Fcgamma RI, II and III). The FcgammaRI family consists of three closely related genes termed A, B, and C. This gene encodes the low affinity FcgammaRIIB receptor that may play an important role in humoral immune response. Alternatively spliced transcript variants encoding different isoforms have been described for this gene. [provided by RefSeq, Oct 2011]
------	--

基因ID	2210
基因名	FCGR1B
Swiss	Q92637
别名	CD64b;IGFRB;FCGR1B

## 产品验证



Western blot analysis of FCGR1B expressed in Mouse plasma using FCGR1B Rabbit pAb at 1:1000. Secondary antibody: HRP Goat Anti-Rabbit IgG (H+L) at 1:5000. Lysates/proteins: 30ug per lane. Blocking buffer: 5% non-fat dry milk in TBST. Detection: ECL Enhanced Kit. Exposure time: 120s.

## 实验步骤

访问官网浏览详情: [www.ablybio.cn](http://www.ablybio.cn)