

EN2 Rabbit pAb

货号: **AYP20861**

产品信息

反应	Human,Mouse,Rat
宿主	Rabbit
克隆性	Polyclonal
预测反应	
应用	WB
推荐浓度	WB: 1:500 - 1:2000
理论分子量	
实测分子量	33kDa
形式	Liquid
保存条件	Store at -20°C. Avoid freeze / thaw cycles. Buffer: PBS with 0.01% thiomersal,50% glycerol,pH7.3.
偶联物	Unconjugated
阳性对照	U-87MG,Mouse brain,Rat brain
细胞定位	fibrillar center,nucleolus,nucleoplasm,nucleus
纯化	Affinity purification

抗原信息

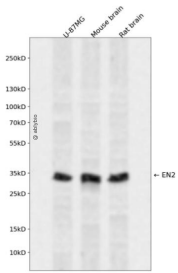
抗原信息	A synthetic peptide corresponding to a sequence within amino acids 250-333 of human EN2 (NP_001418.2).
序列	AFTAEQLQLKAEFQTNRYLTEQRRQSLAQELSLNESQIKIWFQNKRAKIKKATGNKNTLAVHLMAQGLYNHSTTAKEGKSDSE

靶点信息

研究背景	Homeobox-containing genes are thought to have a role in controlling development. In Drosophila, the 'engrailed' (en) gene plays an important role during development in segmentation, where it is required for the formation of posterior compartments. Different mutations in the mouse homologs, En1 and En2, produced different developmental defects that frequently are lethal. The human engrailed homologs 1 and 2 encode homeodomain-containing proteins and have been implicated in the control of pattern formation during development of the central nervous system. [provided by RefSeq, Jul 2008]
------	--

基因ID	2020
基因名	EN2
Swiss	P19622
别名	EN2

产品验证



Western blot analysis of EN2 expressed in U-87MG, Mouse brain, Rat brain using EN2 Rabbit pAb at 1:1000. Secondary antibody: HRP Goat Anti-Rabbit IgG (H+L) at 1:5000. Lysates/proteins: 30ug per lane. Blocking buffer: 5% non-fat dry milk in TBST. Detection: ECL Enhanced Kit. Exposure time: 120s.

实验步骤

访问官网浏览详情: www.ablybio.cn