

Septin 1 Rabbit pAb

货号: **AYP20855**

产品信息

反应	Human,Mouse,Rat
宿主	Rabbit
克隆性	Polyclonal
预测反应	
应用	WB IHC IF/ICC
推荐浓度	WB: 1:500 - 1:1000 IHC: 1:50 - 1:100 IF/ICC: 1:50 - 1:100
理论分子量	
实测分子量	48KDa
形式	Liquid
保存条件	Store at -20°C. Avoid freeze / thaw cycles. Buffer: PBS with 0.01% thiomersal,50% glycerol,pH7.3.
偶联物	Unconjugated
阳性对照	Jurkat,Mouse heart,Rat spleen
细胞定位	microtubule cytoskeleton,microtubule organizing center,septin complex,septin ring,synaptic vesicle
纯化	Affinity purification

抗原信息

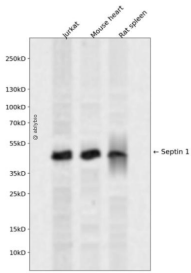
抗原信息	Recombinant fusion protein containing a sequence corresponding to amino acids 270-370 of human Septin 1 (NP_443070.5).
序列	IPFAVVGSCVVRDGGNRPVRRGRYSWGTVEVENPHHCDFLNLRMLVQTHLQDLKEVTHDLLYEGYRARCLQSLARPGARDRASRSKLSRQSATEIPLPM

靶点信息

研究背景	This gene is a member of the septin family of GTPases. Members of this family are required for cytokinesis and the maintenance of cellular morphology. This gene encodes a protein that can form homo- and heterooligomeric filaments, and may contribute to the formation of neurofibrillary tangles in Alzheimer's disease. Alternatively spliced transcript variants have been found but the full-length nature of these variants has not been determined. [provided by RefSeq, Dec 2012]
------	--

基因ID	1731
基因名	SEPT1
Swiss	Q8WYJ6
别名	DIFF6;LARP;PNUTL3;SEP1;SEPT1

产品验证



Western blot analysis of Septin 1 expressed in Jurkat, Mouse heart, Rat spleen using Septin 1 Rabbit pAb at 1:1000. Secondary antibody: HRP Goat Anti-Rabbit IgG (H+L) at 1:5000. Lysates/proteins: 30ug per lane. Blocking buffer: 5% non-fat dry milk in TBST. Detection: ECL Enhanced Kit. Exposure time: 120s.

实验步骤

访问官网浏览详情: www.ablybio.cn