

COL9A2 Rabbit pAb

货号: **AYP20854**

产品信息

反应	Rat
宿主	Rabbit
克隆性	Polyclonal
预测反应	
应用	WB
推荐浓度	WB: 1:500 - 1:2000
理论分子量	
实测分子量	65kDa
形式	Liquid
保存条件	Store at -20°C. Avoid freeze / thaw cycles. Buffer: PBS with 0.01% thiomersal,50% glycerol,pH7.3.
偶联物	Unconjugated
阳性对照	Rat liver
细胞定位	endoplasmic reticulum lumen,extracellular region,extracellular space
纯化	Affinity purification

抗原信息

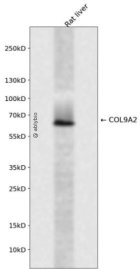
抗原信息	A synthetic peptide corresponding to a sequence within amino acids 600-689 of human COL9A2 (NP_001843.1).
序列	RGEKGDGPGEVGRGHGMPGPPGIPGLPGRPGQAINGKDGDRGSPGAPGEAGRPGPLPGPVGLPGFCEPAACLGASAYASARLTEPGSIKGP

靶点信息

研究背景	This gene encodes one of the three alpha chains of type IX collagen, the major collagen component of hyaline cartilage. Type IX collagen, a heterotrimeric molecule, is usually found in tissues containing type II collagen, a fibrillar collagen. This chain is unusual in that, unlike the other two type IX alpha chains, it contains a covalently attached glycosaminoglycan side chain. Mutations in this gene are associated with multiple epiphyseal dysplasia. [provided by RefSeq, Jul 2008]
基因ID	1298

基因名	COL9A2
Swiss	Q14055
别名	DJ39G22.4;EDM2;MED;STL5;COL9A2

产品验证



Western blot analysis of COL9A2 expressed in Rat liver using COL9A2 Rabbit pAb at 1:1000. Secondary antibody: HRP Goat Anti-Rabbit IgG (H+L) at 1:5000. Lysates/proteins: 30ug per lane. Blocking buffer: 5% non-fat dry milk in TBST. Detection: ECL Enhanced Kit. Exposure time: 120s.

实验步骤

访问官网浏览详情: www.ablybio.cn