

# CRY2 Rabbit pAb

货号: **AYP20851**

## 产品信息

反应	Human,Mouse,Rat
宿主	Rabbit
克隆性	Polyclonal
预测反应	
应用	WB
推荐浓度	<b>WB:</b> 1:100 - 1:500
理论分子量	60kDa/66kDa
实测分子量	70KDa
形式	Liquid
保存条件	Store at -20°C. Avoid freeze / thaw cycles. Buffer: PBS with 0.01% thiomersal,50% glycerol,pH7.3.
偶联物	Unconjugated
阳性对照	Mouse testis,Rat testis,Rat brain
细胞定位	Cytoplasm,Nucleus
纯化	Affinity purification

## 抗原信息

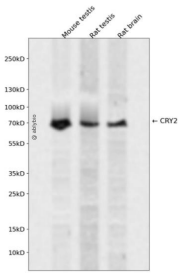
抗原信息	Recombinant fusion protein containing a sequence corresponding to amino acids 1-230 of human CRY2 ( NP_066940.3).
序列	MAATVATAAAVAPAPAGTDSASSVHWFRKGLRLHDNPALLAAVRGARCVRVCVYILDPWFAASSSSVGINRWRFLLSLE DLDTSLRKLNSRLFVVRGQPADVFPRLFKEWGVTRLTFFEYDSEPFGERDAAIMKMAKEAGVEVVTENSHTLYDLDRIIEL NGQKPPLTYKRFQAIISRMELPKKPVGLVTSQQMESCRAEIQENHDETYGVPSLEELGFPTEGLGPAVWQ

## 靶点信息

研究背景	This gene encodes a flavin adenine dinucleotide-binding protein that is a key component of the circadian core oscillator complex, which regulates the circadian clock. This gene is upregulated by CLOCK/ARNTL heterodimers but then represses this upregulation in a feedback loop using PER/CRY heterodimers to interact with CLOCK/ARNTL. Polymorphisms in this gene have been associated with altered sleep patterns. The encoded protein is widely conserved across plants and animals. Two transcript variants encoding different isoforms have been found for this gene. [provided by RefSeq, Feb 2014]
------	--

基因ID	1408
基因名	CRY2
Swiss	Q49AN0
别名	CRY2;HCRY2;PHLL2

## 产品验证



Western blot analysis of CRY2 expressed in Mouse testis,Rat testis,Rat brain using CRY2 Rabbit pAb at 1:1000. Secondary antibody: HRP Goat Anti-Rabbit IgG (H+L) at 1:5000. Lysates/proteins: 30ug per lane. Blocking buffer: 5% non-fat dry milk in TBST. Detection: ECL Enhanced Kit. Exposure time: 120s.

## 实验步骤

访问官网浏览详情: [www.ablybio.cn](http://www.ablybio.cn)