

# SIGLEC1 Rabbit pAb

货号: **AYP20838**

## 产品信息

反应	Human
宿主	Rabbit
克隆性	Polyclonal
预测反应	
应用	WB
推荐浓度	<b>WB:</b> 1:500 - 1:2000
理论分子量	200kDa
实测分子量	200kDa
形式	Liquid
保存条件	Store at -20°C. Avoid freeze / thaw cycles. Buffer: PBS with 0.01% thiomersal, 50% glycerol, pH7.3.
偶联物	Unconjugated
阳性对照	HepG2
细胞定位	early endosome, extracellular region, late endosome, plasma membrane
纯化	Affinity purification

## 抗原信息

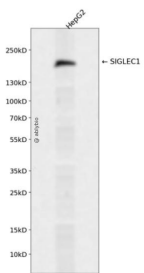
抗原信息	Recombinant fusion protein containing a sequence corresponding to amino acids 50-300 of human SIGLEC1 (NP_075556.1).
序列	EVPDGITAIWYYDYSGQRQVVSADPKLVEARFRGRTEFMGNPEHRVCNLLKDLQPEDSGSYNFRFEISEVNRWSDVK GTLVTVTEEPVPTIASPVELLEGTEVDFNCSTPYVCLQEVRQLWQGDPARSVTFNSQKFEPTGVGHLETLHMAMSW QDHGRILRCQLSVANHRAQSEIHLQVKYAPKGVKILLSPSGRNILPGELVTLTCQVNSSYPVSSIKWLKDGVRQLTKTGVL HLPQAAWSDA

## 靶点信息

研究背景	This gene encodes a member of the immunoglobulin superfamily. The encoded protein is a lectin-like adhesion molecule that binds glycoconjugate ligands on cell surfaces in a sialic acid-dependent manner. It is a type I transmembrane protein expressed only by a subpopulation of macrophages and is involved in mediating cell-cell interactions. Alternative splicing produces a transcript variant encoding an isoform that is soluble rather than membrane-bound; however, the full-length nature of this variant has not been determined.
------	---

基因ID	6614
基因名	SIGLEC1
Swiss	Q9BZZ2
别名	SN;CD169;SIGLEC-1;SIGLEC1

## 产品验证



Western blot analysis of SIGLEC1 expressed in HepG2 using SIGLEC1 Rabbit pAb at 1:1000. Secondary antibody: HRP Goat Anti-Rabbit IgG (H+L) at 1:5000. Lysates/proteins: 30ug per lane. Blocking buffer: 5% non-fat dry milk in TBST. Detection: ECL Enhanced Kit. Exposure time: 120s.

## 实验步骤

访问官网浏览详情: [www.ablybio.cn](http://www.ablybio.cn)