

SSR3 Rabbit pAb

货号: **AYP20830**

产品信息

反应	Human,Mouse,Rat
宿主	Rabbit
克隆性	Polyclonal
预测反应	
应用	WB IHC
推荐浓度	WB: 1:500 - 1:2000 IHC: 1:100 - 1:200
理论分子量	21kDa
实测分子量	21kDa
形式	Liquid
保存条件	Store at -20°C. Avoid freeze / thaw cycles. Buffer: PBS with 0.01% thiomersal,50% glycerol,pH7.3.
偶联物	Unconjugated
阳性对照	Jurkat,K-562,BxPC-3,HeLa,mouse pancreas,mouse uterus,rat pancreas,rat uterus
细胞定位	endoplasmic reticulum
纯化	Affinity purification

抗原信息

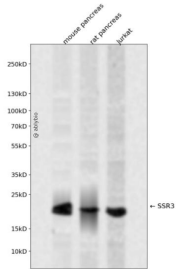
抗原信息	Recombinant fusion protein containing a sequence corresponding to amino acids 70-145 of human SSR3 (NP_009038.1).
序列	TYLVAFAYKNVKFVLKHKVAQKREDAVSKEVTRKLSEADNRKMSRKEKDERILWKKNEVADYEATTF SIFYNNTLF

靶点信息

研究背景	The signal sequence receptor (SSR) is a glycosylated endoplasmic reticulum (ER) membrane receptor associated with protein translocation across the ER membrane. The SSR is comprised of four membrane proteins/subunits: alpha, beta, gamma, and delta. The first two are glycosylated subunits and the latter two are non-glycosylated subunits. This gene encodes the gamma subunit, which is predicted to span the membrane four times.
基因ID	6747

基因名	SSR3
Swiss	Q9UNL2
别名	TRAPG;SSR3

产品验证



Western blot analysis of SSR3 expressed in mouse pancreas, rat pancreas, Jurkat using SSR3 Rabbit pAb at 1:1000. Secondary antibody: HRP Goat Anti-Rabbit IgG (H+L) at 1:5000. Lysates/proteins: 30ug per lane. Blocking buffer: 5% non-fat dry milk in TBST. Detection: ECL Enhanced Kit. Exposure time: 120s.

实验步骤

访问官网浏览详情: www.ablybio.cn