

SMC2 Rabbit pAb

货号: **AYP20827**

产品信息

反应	Human,Mouse
宿主	Rabbit
克隆性	Polyclonal
预测反应	
应用	WB
推荐浓度	WB: 1:500 - 1:2000
理论分子量	124kDa/135kDa
实测分子量	135kDa
形式	Liquid
保存条件	Store at -20°C. Avoid freeze / thaw cycles. Buffer: PBS with 0.01% thiomersal,50% glycerol,pH7.3.
偶联物	Unconjugated
阳性对照	MCF7,Raji,U-87MG,Mouse kidney,Mouse liver
细胞定位	Chromosome,Cytoplasm,Nucleus
纯化	Affinity purification

抗原信息

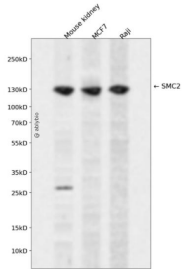
抗原信息	Recombinant fusion protein containing a sequence corresponding to amino acids 700-900 of human SMC 2 (NP_006435.2).
序列	EELAGLKNTAEKYRQLKQQWEMKTEADLLQTKLQSSYHKQQEELDALKKTIEESEETLKNTKEIQRKAEKYEVLNKM KNAEAERERELKDAQKLDCAKTKADASSKKMKEKQQEVEAITLEELKREHTSYKQQLAVNEAIKSYESQIEVMAAEVA KNKESVNKAQEEVTKQKEVITAQDTVIAKAKYAEVAKHK

靶点信息

研究背景	Central component of the condensin complex, a complex required for conversion of interphase chromatin into mitotic-like condense chromosomes. The condensin complex probably introduces positive supercoils into relaxed DNA in the presence of type I topoisomerases and converts nicked DNA into positive knotted forms in the presence of type II topoisomerases.
基因ID	10592

基因名	SMC2
Swiss	O95347
别名	SMC2;CAP-E;CAPE;SMC-2;SMC2L1

产品验证



Western blot analysis of SMC2 expressed in Mouse kidney,MCF7,Raji using SMC2 Rabbit pAb at 1:1000. Secondary antibody: HRP Goat Anti-Rabbit IgG (H+L) at 1:5000. Lysates/proteins: 30ug per lane. Blocking buffer: 5% non-fat dry milk in TBST. Detection: ECL Enhanced Kit. Exposure time: 120s.

实验步骤

访问官网浏览详情: www.ablybio.cn