

FILIP1L Rabbit pAb

货号: **AYP20824**

产品信息

反应	Human,Mouse
宿主	Rabbit
克隆性	Polyclonal
预测反应	
应用	WB
推荐浓度	WB: 1:500 - 1:2000
理论分子量	130kDa
实测分子量	110kDa
形式	Liquid
保存条件	Store at -20°C. Avoid freeze / thaw cycles. Buffer: PBS with 0.01% thiomersal,50% glycerol,pH7.3.
偶联物	Unconjugated
阳性对照	HT-29,mouse ovary,A375
细胞定位	cytoplasm,nucleus
纯化	Affinity purification

抗原信息

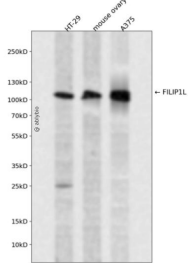
抗原信息	Recombinant fusion protein containing a sequence corresponding to amino acids 1-200 of human FILIP1L (NP_878913.2).
序列	MRSRGSDTEGSAQKKFPRHTKGHSFQGPKNMKHRQQDKDSPESDVILPCPKAEKPHSGNGHQAEDLSRDDLLFLLSILEGELQARDEVIGILKAEKMDLALLEAQYGFVTPKKVLEALQRDAFAQSTPWQEDIYEKPMNELDKVVEKHKESYRRILGQLVAEKSRRTILELEEEKRKHKEYMEKSDEFICLLEQEC

靶点信息

研究背景	Acts as a regulator of the antiangiogenic activity on endothelial cells. When overexpressed in endothelial cells, leads to inhibition of cell proliferation and migration and an increase in apoptosis. Inhibits melanoma growth When expressed in tumor-associated vasculature.
基因ID	11259

基因名	FILIP1L
Swiss	Q4L180
别名	DOC1;DOC-1;GIP90;GIP130;FILIP1L

产品验证



Western blot analysis of FILIP1L expressed in HT-29, mouse ovary, A375 using FILIP1L Rabbit pAb at 1:1000. Secondary antibody: HRP Goat Anti-Rabbit IgG (H+L) at 1:5000. Lysates/proteins: 30ug per lane. Blocking buffer: 5% non-fat dry milk in TBST. Detection: ECL Enhanced Kit. Exposure time: 120s.

实验步骤

访问官网浏览详情: www.ablybio.cn