

MRPL18 Rabbit pAb

货号: **AYP20819**

产品信息

| | |
|-------|--|
| 反应 | Human,Mouse |
| 宿主 | Rabbit |
| 克隆性 | Polyclonal |
| 预测反应 | |
| 应用 | WB IHC IF/ICC |
| 推荐浓度 | WB: 1:500 - 1:2000 IHC: 1:50 - 1:200 IF/ICC: 1:50 - 1:200 |
| 理论分子量 | 20kDa |
| 实测分子量 | 18kDa |
| 形式 | Liquid |
| 保存条件 | Store at -20°C. Avoid freeze / thaw cycles. Buffer: PBS with 0.01% thiomersal,50% glycerol,pH7.3. |
| 偶联物 | Unconjugated |
| 阳性对照 | HepG2,K-562 |
| 细胞定位 | extracellular space,mitochondrial inner membrane,mitochondrial ribosome,mitochondrion |
| 纯化 | Affinity purification |

抗原信息

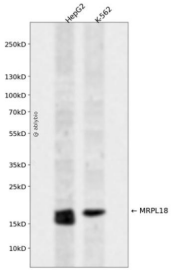
| | |
|------|---|
| 抗原信息 | Recombinant fusion protein containing a sequence corresponding to amino acids 1-92 of human MRPL18 (NP_054880.2). |
| 序列 | MALRSRFWGLFSVCRNPGCRFAALSTSSEPAAKPEVDPVENEAVAPEFTNRNPRNLELLSVARKERGWRTVFPSREFWHR LRVIRTQHHVEA |

靶点信息

| | |
|------|--|
| 研究背景 | This nuclear gene encodes a protein component of the larger 39S subunit of mitochondrial ribosome. This protein may also aid in the import of nuclear-encoded 5S rRNA into mitochondria. Alternative splicing results in multiple transcript variants, most of which are not predicted to encode a protein. A pseudogene of this gene is found on chromosome 16. |
|------|--|

| | |
|-------|------------------------------|
| 基因ID | 29074 |
| 基因名 | MRPL18 |
| Swiss | Q9H0U6 |
| 别名 | MRPL18;HSPC071;L18mt;MRP-L18 |

产品验证



Western blot analysis of MRPL18 expressed in HepG2,K-562 using MRPL18 Rabbit pAb at 1:1000. Secondary antibody: HRP Goat Anti-Rabbit IgG (H+L) at 1:5000. Lysates/proteins: 30ug per lane. Blocking buffer: 5% non-fat dry milk in TBST. Detection: ECL Enhanced Kit. Exposure time: 120s.

实验步骤

访问官网浏览详情: www.ablybio.cn