

SCRIB Rabbit pAb

货号: **AYP20811**

产品信息

反应	Human
宿主	Rabbit
克隆性	Polyclonal
预测反应	
应用	WB
推荐浓度	WB: 1:500 - 1:1000
理论分子量	175kDa
实测分子量	260KDa
形式	Liquid
保存条件	Store at -20°C. Avoid freeze / thaw cycles. Buffer: PBS with 0.01% thiomersal,50% glycerol,pH7.3.
偶联物	Unconjugated
阳性对照	MCF7
细胞定位	basolateral plasma membrane,extracellular exosome,extrinsic component of postsynaptic density membrane,glutamatergic synapse,immunological synapse,myelin sheath abaxonal region,nucleoplasm,plasma membrane,postsynaptic density,presynapse,Scrb-APC-beta-catenin complex
纯化	Affinity purification

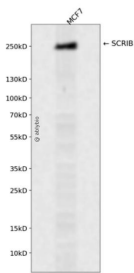
抗原信息

抗原信息	Recombinant fusion protein containing a sequence corresponding to amino acids 1100-1400 of human SCRIB (NP_874365.3).
序列	ELCIQKAPGERLGISIRGGARGHAGNPRDPTDEGIFISKVSPTGAAGRDGRLRVGLRLLLEVNQQSLLGLTHGEAVQLLRVSV GDTLTVLVCDGFEASTDAALEVSPGVIANPFAAGIGHRNSLESISSIDRELSPEGPGKEKELPGQTLHWGPEATEAAGRGL QPLKLDYRALAAVPSAGSVQRVPSGAAGGKMAESPCSPSGQQPPSPSPDEL PANVKQAYRAFAAVPTSHPPEDAPAQP PTPGPAASPEQLSFRERQKYFELEVRVPQAEGPPKRVSLVGADDLRKMQEEEEARKLQQR

靶点信息

研究背景	This gene encodes a protein that was identified as being similar to the Drosophila scribble protein. The mammalian protein is involved in tumor suppression pathways. As a scaffold protein involved in cell polarization processes, this protein binds to many other proteins. The encoded protein binds to papillomavirus E6 protein via its PDZ domain and the C-terminus of E6. Two alternatively spliced transcript variants that encode different protein isoforms have been found for this gene.
基因ID	23513
基因名	SCRIB
Swiss	Q14160
别名	CRIB1;SCRB1;SCRIB1;Vartul;SCRIB

产品验证



Western blot analysis of SCRIB expressed in MCF7 using SCRIB Rabbit pAb at 1:1000. Secondary antibody: HRP Goat Anti-Rabbit IgG (H+L) at 1:5000. Lysates/proteins: 30ug per lane. Blocking buffer: 5% non-fat dry milk in TBST. Detection: ECL Enhanced Kit. Exposure time: 120s.

实验步骤

访问官网浏览详情: www.ablybio.cn