

# Phospho-LDHA-Y10 Rabbit pAb

货号: **AYP20806**

## 产品信息

反应	Human,Mouse
宿主	Rabbit
克隆性	Polyclonal
预测反应	
应用	WB
推荐浓度	<b>WB:</b> 1:500 - 1:1000
理论分子量	37kDa
实测分子量	37KDa
形式	Liquid
保存条件	Store at -20°C. Avoid freeze / thaw cycles. Buffer: PBS with 0.01% thiomersal,50% glycerol,pH7.3.
偶联物	Unconjugated
阳性对照	NIH/3T3
细胞定位	Cytoplasm
纯化	Affinity purification

## 抗原信息

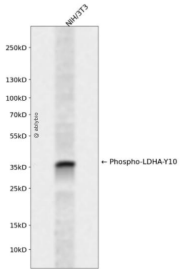
抗原信息	A synthetic phosphorylated peptide around Y10 of human LDHA (NP_001128711.1).
序列	LIYNL

## 靶点信息

研究背景	The protein encoded by this gene catalyzes the conversion of L-lactate and NAD to pyruvate and NADH in the final step of anaerobic glycolysis. The protein is found predominantly in muscle tissue and belongs to the lactate dehydrogenase family. Mutations in this gene have been linked to exertional myoglobinuria. Multiple transcript variants encoding different isoforms have been found for this gene. The human genome contains several non-transcribed pseudogenes of this gene.
基因ID	3939

基因名	LDHA
Swiss	P00338
别名	GSD11;HEL-S-133P;LDHM;PIG19;LDHA

## 产品验证



Western blot analysis of Phospho-LDHA-Y10 expressed in NIH/3T3 using Phospho-LDHA-Y10 Rabbit pAb at 1:1000. Secondary antibody: HRP Goat Anti-Rabbit IgG (H+L) at 1:5000. Lysates/proteins: 30ug per lane. Blocking buffer: 5% non-fat dry milk in TBST. Detection: ECL Enhanced Kit. Exposure time: 120s.

## 实验步骤

访问官网浏览详情: [www.ablybio.cn](http://www.ablybio.cn)