

PDCD1LG2 Rabbit pAb

货号: **AYP20794**

产品信息

反应	Human,Mouse,Rat
宿主	Rabbit
克隆性	Polyclonal
预测反应	
应用	WB IF/ICC
推荐浓度	WB: 1:500 - 1:1000 IF/ICC: 1:50 - 1:200
理论分子量	
实测分子量	45-60KDa
形式	Liquid
保存条件	Store at -20°C. Avoid freeze / thaw cycles. Buffer: PBS with 0.05% proclin300,50% glycerol,pH7.3.
偶联物	Unconjugated
阳性对照	Rat spleen,Rat thymus
细胞定位	external side of plasma membrane,extracellular region,plasma membrane
纯化	Affinity purification

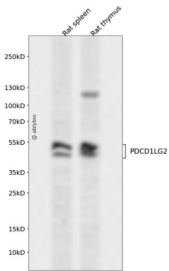
抗原信息

抗原信息	A synthetic peptide corresponding to a sequence within amino acids 100-200 of human PDCD1LG2 (NP_079515.2).
序列	YQCIIYGVAWDYKYLTLLKVKASYRKINTHILKVPETDEVELTCQATGYPLAEVSWPNVSV PANTSHSRTPEGLYQVTSVLRLLKPPPGRNFSCVFWNTHVR

靶点信息

研究背景	Programmed Death Ligand 2 (PD-L2), also known as B7-DC and butyrophilin-like protein, is a member of the B7 family of proteins that provide signals for regulating T-cell activation and tolerance. PD-L2 is expressed on dendritic cells, subsets of activated CD4+ and CD8+ T cells, and memory B cells that differentiate into plasma cells. At inflammatory sites such as rheumatoid arthritis, allergen exposure, and virus infection, PD-L2 is up-regulated on synoviocytes, infiltrating macrophages, dendritic cells, and airway epithelial cells. PD-L2, along with B7-H1/PD-L1, binds to T cell PD-1 where it promotes IFN-gamma production and CD40 Ligand up-regulation while inhibiting IL-4 production. In addition, PD-L2 binds to RGM-B on macrophages and alveolar epithelial cells, supporting respiratory immune tolerance. In asthma, PD-L2 suppresses IL-5 and IL-13 production, promotes IL-12 production by dendritic cells, and supports allergen-induced airway hyper-responsiveness and mucus production.
基因ID	80380
基因名	PDCD1LG2
Swiss	Q9BQ51
别名	B7DC;Btdc;CD273;PD-L2;PDCD1L2;PDL2;bA574F11.2;PDCD1LG2

产品验证



Western blot analysis of PDCD1LG2 expressed in Rat spleen, Rat thymus using PDCD1LG2 Rabbit pAb at 1:1000. Secondary antibody: HRP Goat Anti-Rabbit IgG (H+L) at 1:5000. Lysates/proteins: 30ug per lane. Blocking buffer: 5% non-fat dry milk in TBST. Detection: ECL Enhanced Kit. Exposure time: 120s.

实验步骤

访问官网浏览详情: www.ablybio.cn