

RAB1A Rabbit pAb

货号: **AYP20788**

产品信息

反应	Human,Mouse,Rat
宿主	Rabbit
克隆性	Polyclonal
预测反应	
应用	WB IHC IF/ICC
推荐浓度	WB: 1:500 - 1:1000 IHC: 1:100 - 1:200 IF/ICC: 1:50 - 1:200
理论分子量	13kDa/15kDa/22kDa
实测分子量	23KDa
形式	Liquid
保存条件	Store at -20°C. Avoid freeze / thaw cycles. Buffer: PBS with 0.05% proclin300,50% glycerol,pH7.3.
偶联物	Unconjugated
阳性对照	HT-29,NIH/3T3,Mouse brain,C6,Rat kidney
细胞定位	Cytoplasm,Early endosome,Endoplasmic reticulum,Golgi apparatus,Melanosome,Membrane,cytosol
纯化	Affinity purification

抗原信息

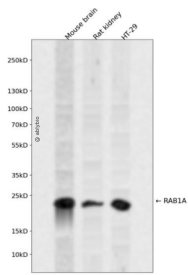
抗原信息	A synthetic peptide corresponding to a sequence within amino acids 100-205 of human RAB1A (NP_004152.1).
序列	NNVKQWLQEIDRYASENVNKLIVGNKCDLTTKKVVDYTTAKEFADSLGIPFLETSAKNATNVEQSFMTMAAEIKRMGPG ATAGGAEKSNVKIQSTPQSGGGCC

靶点信息

研究背景	This gene encodes a member of the Ras superfamily of GTPases. Members of the gene family cycle between inactive GDP-bound and active GTP-bound forms. This small GTPase controls vesicle traffic from the endoplasmic reticulum to the Golgi apparatus. Multiple alternatively spliced transcript variants have been identified for this gene which encode different protein isoforms.
------	--

基因ID	5861
基因名	RAB1A
Swiss	P62820
别名	RAB1A;RAB1;YPT1

产品验证



Western blot analysis of RAB1A expressed in Mouse brain,Rat kidney,HT-29 using RAB1A Rabbit pAb at 1:1000. Secondary antibody: HRP Goat Anti-Rabbit IgG (H+L) at 1:5000. Lysates/proteins: 30ug per lane. Blocking buffer: 5% non-fat dry milk in TBST. Detection: ECL Enhanced Kit. Exposure time: 120s.

实验步骤

访问官网浏览详情: www.ablybio.cn