

DOCK1 Rabbit pAb

货号: **AYP20787**

产品信息

反应	Human
宿主	Rabbit
克隆性	Polyclonal
预测反应	
应用	WB
推荐浓度	WB: 1:500 - 1:2000
理论分子量	215kDa
实测分子量	215kDa
形式	Liquid
保存条件	Store at -20°C. Avoid freeze / thaw cycles. Buffer: PBS with 0.01% thiomersal, 50% glycerol, pH 7.3.
偶联物	Unconjugated
阳性对照	293T
细胞定位	
纯化	Affinity purification

抗原信息

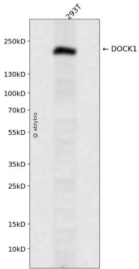
抗原信息	A synthetic peptide corresponding to a sequence within amino acids 1800-1867 of human DOCK1 (NP_001371.1).
序列	PPLPLKGSVADYGNLNMQDLLGSPTPPPPPHQRHLPPLPSKTPPPPPKTRKQTSVDSGIVQ//

靶点信息

研究背景	This gene encodes a member of the dedicator of cytokinesis protein family. Dedicator of cytokinesis proteins act as guanine nucleotide exchange factors for small Rho family G proteins. The encoded protein regulates the small GTPase Rac, thereby influencing several biological processes, including phagocytosis and cell migration. Overexpression of this gene has also been associated with certain cancers. Alternative splicing results in multiple transcript variants.
基因ID	1793

基因名	DOCK1
Swiss	B2RUU3
别名	ced5;DOCK180;DOCK1

产品验证



Western blot analysis of DOCK1 expressed in 293T using DOCK1 Rabbit pAb at 1:1000. Secondary antibody: HRP Goat Anti-Rabbit IgG (H+L) at 1:5000. Lysates/proteins: 30ug per lane. Blocking buffer: 5% non-fat dry milk in TBST. Detection: ECL Enhanced Kit. Exposure time: 120s.

实验步骤

访问官网浏览详情: www.ablybio.cn